



**nileGUIDE**

ALL YOU NEED TO PLAN YOUR PERFECT TRIP



maveric2003

# Griffith Park Attractions

## West Hollywood, Los Angeles, 2 Days

### Table of contents:

Guide Description	2
Itinerary Overview	3
Daily Itineraries	4
Los Angeles Snapshot	13

# Guide Description



**AUTHOR NOTE:** Perched between the Los Feliz and Hollywood neighborhood and the San Fernando Valley, Griffith Park is a destination with something for everyone. In this very large park are museums, a zoo, the famous Griffith Observatory, the Greek Theater, some golf course and much more.

Day 1 of this guide will help you to locate some of the sites in the park.

Day 2 lists some nearby destinations worth checking out, including some destinations in the trendy Los Feliz shopping district on Vermont Ave.

[Photo courtesy of Clinton Steed]

# Itinerary Overview

things to do  
restaurants  
hotels  
nightlife

## Day 1 - West Hollywood, Los Angeles

DAY NOTE: Attractions in the park



### Griffith Park

Tons of Activities



### Griffith Observatory

Panoramic Views & Planetarium Shows



### The Greek Theatre

A breathtaking seasonal venue



### Roosevelt Municipal Golf Course

Nine holes in Griffith Park



### Fern Dell Trail

(also known as Ferndell) Short shady walk along a stream featuring 50 types of ferns



### The Trails Cafe

Lunch Spot and Cafe in Griffith Park



### Bronson Caves

An old Hollywood quarry



### The HOLLYWOOD Sign

Beacon of Tinseltown



### Travel Town Museum

Training wheels



### Los Angeles Zoo

Walk on the Wild Side



### Autry National Center - Museum of the American West

Western history



### Griffith Park--Harding & Wilson Courses

Golf in this historic park



### Griffith Park Merry Go Round

Great old carousel--still going strong



### Old L.A. Zoo

Abandoned zoo is now a picnic area

## Day 2 - Los Angeles, West Hollywood

DAY NOTE: Sites near-by the park



### American Film Institute

Leading film studios campus



### Ennis-Brown House

Wright's largest Mayan mansion



### The Dresden Room

The Rat Pack would Approve



### Hollyhock House

Art house



### Fatburger

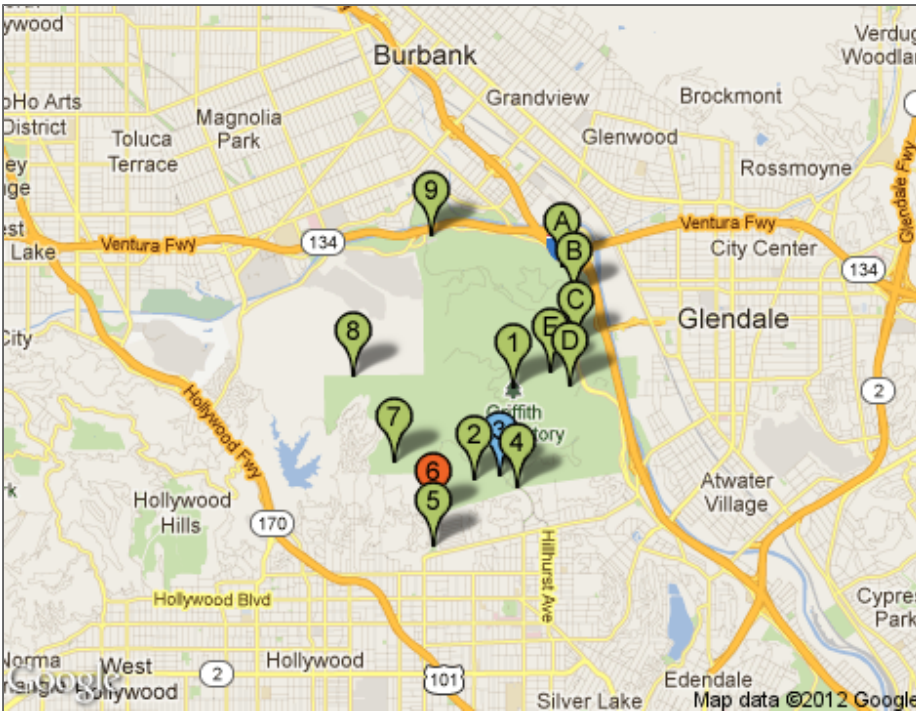
This fast food chain is a step above



### Los Feliz Municipal Golf Course

Neighborhood par three

# Day 1 - West Hollywood, Los Angeles



## QUICK NOTE

DAY NOTE: Attractions in the park

### contact:

tel: 323/913-4688

<http://www.laparks.org/dos/parks/griffithPK/>

### location:

4730 Crystal Springs Drive  
Hollywood CA 90028

## 1 Griffith Park

**DESCRIPTION:** Mining tycoon Col. Griffith J. Griffith donated these 4,107 acres to the city in 1896 as a Christmas gift. Today Griffith Park is the largest urban park in America. There's a lot to do here, including 53 miles of hiking trails (the prettiest is the Fern Dell trail near the Western Ave. entrance, a shady hideaway cooled by waterfalls and ferns), horseback riding, golfing, swimming, biking, and picnicking. For a general overview of the park, drive the mountainous loop road that winds from the top of Western Avenue, past Griffith Observatory, and down to Vermont Avenue. For a more extensive foray, turn north at the loop road's midsection, onto Mount Hollywood Drive. To reach the golf courses, the **Museum of the American West**, or **Los Angeles Zoo**, take Los Feliz Boulevard to Riverside Drive, which runs along the park's western edge. Near the zoo, in a particularly dusty corner of the park, you can find the **Travel Town Transportation Museum**, 5200 Zoo Dr. (tel. **323/662-5874**), a little-known outdoor museum with a small collection of vintage locomotives and old airplanes. Kids love the miniature train ride that circles the perimeter of the museum. The museum is open Monday through Friday from 10am to 4pm, and Saturday and Sunday from 10am to 5pm; admission is free. © Frommer's



wcities

**contact:**

tel: 213/473-0800  
<http://www.GriffithObservatory.org/>

**location:**

2800 E. Observatory Rd  
Los Angeles CA 90027

**hours:**

Tues-Fri noon-10pm; Sat-Sun 10am-10pm. Call or check website for planetarium showtimes

**2 Griffith Observatory**

**DESCRIPTION:** Made world-famous in the film *Rebel Without a Cause*, Griffith Observatory's bronze domes have been Hollywood Hills landmarks since 1935. Closed for renovation for what seemed like forever, it finally reopened in November of 2006 after a \$93-million overhaul. The central dome houses the 300-seat **Samuel Oschin Planetarium**, where hourly screenings of a narrated half-hour projection show called "Centered in the Universe" reveal the stars and planets that are hidden from the naked eye by the city's ubiquitous lights and smog. The observatory also features 60 space-related exhibits designed to "sparkle your imagination," the highlight being the largest astronomically accurate image ever produced -- a 20\*152-foot porcelain enamel dazzler that's cleverly called "The Big Picture." It supposedly encompasses a million galaxies, but I lost count after 11. There's also a new 200-seat Leonard Nimoy Event Horizon Theater (go Spock!), a Wolfgang Puck "Café at the End of the Universe," and several Zeiss and solar telescopes for public use both day and night. Truth be told, most locals never actually go inside the observatory; they come to this spot on the south slope of Mount Hollywood for the unparalleled city views. On warm nights, with the lights twinkling below, this is one of the most romantic places in L.A. © Frommer's



wcities

**contact:**

tel: (323) 665-5857  
<http://www.greektheatrela.com/>

**location:**

2700 North Vermont  
Los Angeles CA 90027

**3 The Greek Theatre**

**DESCRIPTION:** Located in beautiful Griffith Park and given to the City of Los Angeles as a gift in 1896, this is an outdoor concert venue you must experience while staying in L.A. Though it can seat more than 6,000 patrons, you may never again enjoy such a truly intimate setting for listening to one of your favorite performers. Surrounded by trees, the space offers outstanding acoustics. Whether you prefer classical music, rock, easy listening or jazz, you'll love this place. Ticket prices vary widely and can often be somewhat expensive. Depending on the time of year, you'll probably want to bring along a sweater or jacket, since you'll be seated outdoors in a city that can get a bit chilly in the evenings. On show nights the box office remains open for 30 minutes before the show. © wcities.com



citysearch

**contact:**

tel: +1 323 665 2011  
<http://www.lacity.org/RAP/dos/parks/griffithPK/golf.htm>

**location:**

2650 North Vermont Avenue  
Los Angeles CA 90027

**hours:**

**4 Roosevelt Municipal Golf Course**

**DESCRIPTION:** Another golf course inside Griffith Park, a number of these nine holes lie in the shadow of the observatory. At 2,478 yards, this course is a rather long par three with a number of sand traps and plenty of trees along the fairways. In order to make a reservation you must obtain a Los Angeles city card. Rental clubs are available if needed. Only cash is accepted as payment. © wcities.com



Photo courtesy of Roosevelt Municipal Golf Course

Call for timings

**contact:**

<http://www.laparks.org/dos/parks/griffithpk/ferndell.htm>

**location:**

2150 Fern Dell Drive  
Los Angeles California 90068

**5 Fern Dell Trail**

**DESCRIPTION:** This scenic and shady walk on the edge of Griffith Park starts on the west side of Fern Dell Drive, near the intersection with Black Oak Drive. You follow a man-made creek replete with shade loving vegetation. After a short interval (about a quarter of a mile), the path crosses under Fern Dell Drive and soon after you exit the garden.

From here you can continue for a short hike (about a mile) uphill to Griffith Observatory. If you are braced for the continuous mile going uphill, this is actually great low-stress way to access the observatory. There are two branches of this trail up the ravine, making it feel like more like a loop.

© NileGuide



Photo courtesy of cutglasdecanter

**contact:**

tel: (323) 871-2102  
<http://www.facebook.com/traifsa>

**location:**

2333 Fern Dell Drive  
Los Angeles CA 90068

**6 The Trails Cafe**

**DESCRIPTION:** This cafe is located at the southern corner of Griffith Park, on Fern Dell Drive. Serving typical cafe fare with a vegetarian twist, such as sandwiches, pastries, and more, this cafe is a great place for lunch or a latte after taking a hike in the park. Favorites include the avocado sandwich and the lavender cookies. With its location, it's also a good place for families, with lots of space for kids to run around. © wcities.com



Photo courtesy of tkksummers

**hours:**

8am to 5pm

**contact:**

tel: (213) 913-4688 (Ranger Station)  
fax: (213) 847-7129  
<http://www.laparks.org/dos/parks/facility/bronsonCanyonGP.htm>

**location:**

West side of Griffith Park  
Los Angeles CA 90026

**7 Bronson Caves**

**OUR LOCAL EXPERT SAYS:**

Getting to the caves is a short walk. Park your car at the first (larger) parking area and walk onwards (towards Griffith Park). After a short distance turn right onto the road with a red high curb. After another short distance bear left to find the caves. Other paths lead farther into Griffith Park.

**DESCRIPTION:** These caves, located in Griffith Park, are the result of an old quarry dug in 1903 by the Union Rock Company in order to mine materials to use in building the surrounding streets. After the quarry closed in the 1920s, it became a spot for movie shoots. Scenes from Invasion of the Body Snatchers were shot here and more recently, the Mighty Morphin Power Rangers. © wcities.com

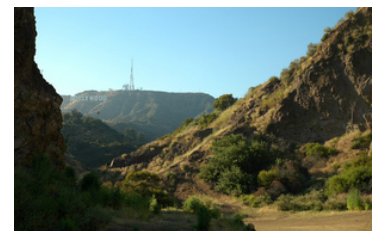


Photo courtesy of Clinton Steeds

**contact:**  
tel: +1 323 258 4338  
<http://www.hollywoodsign.org/>

**location:**  
6342 Mulholland Highway  
Los Angeles CA 90013

## 8 The HOLLYWOOD Sign

**DESCRIPTION:** These famous 50-foot-high white sheet-metal letters have come to symbolize the movie industry and the city itself. The sign was erected on Mount Lee in 1923 as an advertisement for a real-estate development. The full text originally read HOLLYWOODLAND and was lined with thousands of 20-watt bulbs around the letters (changed periodically by a caretaker who lived in a small house behind the sign). The sign gained dubious notoriety when actress Peg Entwistle leapt to her death from the "H" in 1932. The LAND section was damaged by a landslide, and the entire sign fell into major disrepair until the Hollywood Chamber of Commerce spearheaded a campaign to repair it (Hugh Hefner, Alice Cooper, Gene Autry, and Andy Williams were all major contributors). Officially completed in 1978, the 450-foot-long installation is now protected by a fence and motion detectors. The best view is from down below, at the corner of Sunset Boulevard and Bronson Avenue. **Tip:** It may look like it on a map, but Beachwood Drive does not lead to the sign. If you want to reach the sign on foot, it requires a rather arduous 5-mile round-trip hike on the Brush Canyon Trail in Griffith Park -- the trail head is at the end of Canyon Drive. For more information call the Griffith Park headquarters at tel. **323/913-4688**. © Frommer's



**contact:**  
tel: (323) 662-5874  
<http://www.traveltown.org/>

**location:**  
5200 Zoo Drive  
Los Angeles CA 90027

## 9 Travel Town Museum

**DESCRIPTION:** This place is heaven for train-loving tots. An interactive museum in the old-fashioned sense of the word, youngsters can climb in, around or on all the attractions, and many of them will want to do so for hours upon end. Kids can even take a mini train ride for a small fee. The antiques, which include artifacts from trains to classic cars to horse-drawn carriages, showcase the country's railway history—which is especially relevant to California. This museum is a treasure for transportation lovers of all ages. © wcities.com



wcities

**contact:**  
tel: (323) 644-4200  
<http://www.lazoo.org>

**location:**  
5333 Zoo Dr  
Los Angeles CA 91203

**hours:**  
Daily 10am-5pm (until 6pm  
July 1 to Labor Day)

## A Los Angeles Zoo

**DESCRIPTION:** The L.A. Zoo has been welcoming visitors and busloads of school kids since 1966. In 1982, the zoo inaugurated a display of cuddly koalas, still one of its biggest attractions among 1,200 animals from around the world. Although it's smaller than the world-famous San Diego Zoo, the L.A. Zoo is far more easy to fully explore. As much an arboretum as a zoo, the grounds are thick with mature shade trees from around the world that help cool the once-barren grounds, and new habitats are light-years ahead of the cruel concrete roundhouses originally used to exhibit animals (though you can't help feeling that, despite the fancy digs, all the creatures would rather be in their natural habitat).



Photo courtesy of los angeles zoo & botanical gardens

The zoo's latest attraction is new \$19-million **Campo Gorilla Reserve**, a habitat for six African lowland gorillas that closely resembles their native West African homeland. Visitors partake in a pseudo-African-jungle experience as they journey along a misty, forested pathway with glassed viewing areas for close-up views of the gorillas living in two separate habitats: one for a family troop of gorillas, led by a silverback male; and a separate habitat for two bachelors. Other highlights include the **Sea Lion Cliffs** habitat, home to the zoo's five sea lions where visitors can view the saltwater habitat from an underwater glass viewing area; the **Chimpanzees of the Mahale Mountains** habitat, where visitors can see plenty of primate activity; the **Red Ape Rainforest**, a natural orangutan habitat; the entertaining **World of Birds** show; the **Pachyderm Forest** (climate-controlled digs for the elephants and hippos, complete with an underwater viewing area); and the **Mandrills Exhibit** (the world's largest and most colorful baboons). The gargantuan Andean condor had me enthralled as well (the facility is renowned in zoological circles for the successful breeding and releasing of California condors, and occasionally some of these majestic and endangered birds are on exhibit). Kids will also enjoy the **Winnick Family Children's Zoo**, which contains a petting area, exhibition animal-care center, Adventure Theater storytelling and puppet show, and other kid-hip exhibits and activities. **Tip:** To avoid the busloads of rambunctious school kids, arrive after noon. © Frommer's

**contact:**

tel: +1 323 667 2000  
fax: +1 323 660 5721  
<http://www.autry-museum.org/>

**location:**

4700 Western Heritage Way  
Los Angeles CA 90027-1462

**B** **Autry National Center - Museum of the American West**

**DESCRIPTION:** Gene Autry opened this museum in 1988 to showcase western history. The museum features several rotating exhibits as well as a permanent collection. Art and artifacts from the Old West are on display, from the West's prehistoric roots to the 20th Century's Hollywood glamorization of the Wild West. Using film, radio and television clips, and a hands-on discovery center for children, the museum sheds a bright light on this part of the nation's heritage. © wcities.com

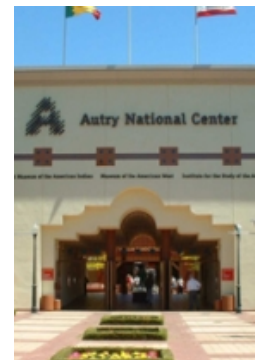


Photo courtesy of Autry National Center

**contact:**

tel: +1 323 664 2255  
[http://losangeles.citysearch.com/profile/11495267/los\\_angeles\\_ca/griffith\\_park\\_golf\\_courses.html](http://losangeles.citysearch.com/profile/11495267/los_angeles_ca/griffith_park_golf_courses.html)

**location:**

4730 Crystal Springs Drive  
Los Angeles CA 90027

**C** **Griffith Park--Harding & Wilson Courses**

**DESCRIPTION:** These two public courses are located inside of the city's largest park, and each course comes complete with its own distinctive challenges. The Harding course is more scenic and has considerably more natural hazards including trees and water. The Wilson course requires longer drives but not as much accuracy in the approach to the greens. All courses are very reasonably priced. Amenities include a clubhouse, locker rooms, electric carts, club rentals, a snack bar and a driving range. © wcities.com

**hours:**

Daily sunrise to 11pm

**contact:**  
tel: (323) 665-3051  
<http://www.laparks.org/dos/parks/griffithpk/mgr.htm>

**location:**  
4730 Crystal Springs Drive  
Los Angeles CA 90027

## **D** Griffith Park Merry Go Round

### **OUR LOCAL EXPERT SAYS:**

The park website states: "Open weekends throughout the year and weekdays during the summer, and over Christmas and Easter vacations, 11 a.m. to 5 p.m."

**DESCRIPTION:** This carousel is fully functional, though it may no be quite as shiny as it once was. It's true this lovely contraption is a historic relic (complete with Stinson 165 organ), but never-mind it keeps working and definitely makes for a fun place to go with kids. Nearby (walking down the hill) is the sprawling Shane's Inspiration playground.  
© NileGuide



Photo courtesy of Xurble

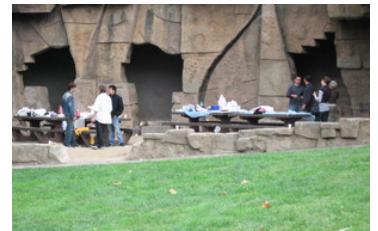
**location:**  
Griffith Park Dr  
Los Angeles California 90027

## **E** Old L.A. Zoo

**DESCRIPTION:** The original Los Angeles zoo in Griffith Park opened in 1912, with a lot of building occurring in the 1930s. In 1966 this original zoo area was abandoned and the facility moved to its current location.

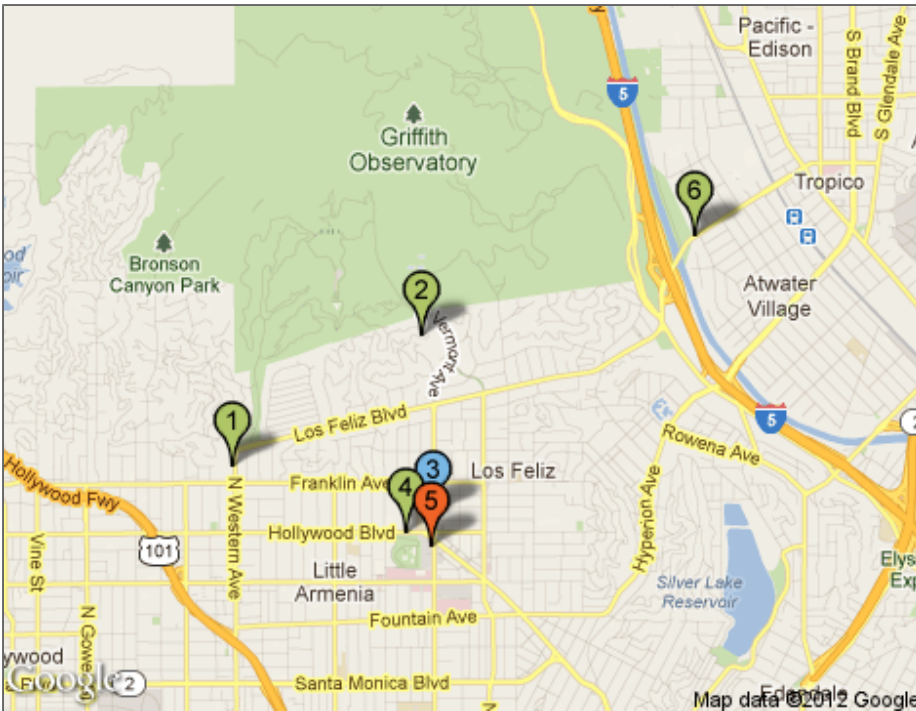
A lot of the ruins of this place still exist today. What is especially neat is that bear caves have been turned into picnic areas. The place makes for an odd environment that is a fun to explore.

There are a lot of trails in the area. . . . if you follow the trail on the hill above the bear cages you will see more remnants of the zoo. . . . Nearby is also Shane's Inspiration Playground and the historic Griffith Park Merry Go Round.  
© NileGuide



6500K

# Day 2 - Los Angeles, West Hollywood



## QUICK NOTE

DAY NOTE: Sites near-by the park

### contact:

tel: +1 323 856 7600  
fax: +1 323 467 4578  
<http://www.afionline.org>

### location:

2021 North Western Avenue  
Los Angeles CA 90027

### hours:

Open to the public: 9a-5p M-F

## 1 American Film Institute

**DESCRIPTION:** It stands to reason that a renowned institution for film studies would be located in Los Angeles. Sponsor of the Los Angeles Film Festival and one of the finest places to study film in the world, this establishment is a government-backed institution founded in 1965. The institute offers courses to accomplished filmmakers and the general public, as well as various programs aimed at film preservation. This is the nation's main AFI campus with the other major component being the AFI National Theater at the Kennedy Center in Washington D.C. There is no admission fee for tours. Call for details on class times and access to research facilities. © wcities.com



### contact:

tel: 6264054842  
<http://www.ennishouse.org/>

### location:

2607 Glendower Avenue  
Los Angeles CA 90027

## 2 Ennis-Brown House

### OUR LOCAL EXPERT SAYS:

The house is not open to the public. However, it is located in the U of the road making it easy to walk around and take in the outside of this monumental structure.

**DESCRIPTION:** Many consider Ennis-Brown House to be the most impressive of the Frank Lloyd Wright area residences.



Photo courtesy of jplouis

Built in 1924, Wright used Mayan art and architecture as his dominant influence for this home. It was given its current name in 1980 when then-owner, Augustus O. Brown donated the house to the Trust for Preservation of Cultural Heritage. The house has been featured dozens of times in film and television, most famously in the Ridley Scott sci-fi classic Blade Runner. Situated near Griffith Park, the house is highly visible from several area neighborhoods. © wcities.com

**contact:**  
tel: 323/665-4294  
<http://www.thedresden.com>

**location:**  
1760 N. Vermont Avenue  
Hollywood CA 90027

### 3 The Dresden Room

**DESCRIPTION:** Hugely popular with L.A. hipsters because of its longevity, location, often-overlooked cuisine, and elegant ambience, "the Den" was pushed into the mainstream of L.A. nightlife thanks to its inclusion in the movie Swingers. But it's the timeless lounge act of Marty and Elayne (the couple has been performing there up to 5 nights a week since 1982) that has proven that, fad or no fad, this place is always cool. Sidle up to the bar for a blue glass of the house classic, Blood and Sand -- a space-age margarita of sorts. © Frommer's



wcities

**contact:**  
tel: +1 323 644 6269  
<http://www.hollyhockhouse.net/>

**location:**  
4800 Hollywood Boulevard  
Los Angeles CA 90027

### 4 Hollyhock House

**OUR LOCAL EXPERT SAYS:**

Tours of the house are offered Wednesdays through Sundays at 12:30, 1:30, 2:30 & 3:30 PM. The cost is \$7 general, \$3 seniors, and \$2 (or free if with an adult) for youth under 17.

**DESCRIPTION:** Frank Lloyd Wright, a famed architect, built Hollyhock House for Aline Barnsdall in 1923. The heritage house was handed to the city in 1927, and has been home to many organizations over the years. Located within the environs of Barnsdall Park, the house is surrounded by galleries, studios and a theater and attracts scores of visitors. The quaint village of Los Feliz is a hop, skip and jump away. Tickets for the tours can be purchased at the Municipal Art Gallery. © wcities.com



<http://www.hollyhockhouse.net/hhimages/mwwest2.jpg>

**contact:**  
tel: (323) 663-3100  
<http://www.fatburger.com/home/>

**location:**  
1611 North Vermont Avenue  
Los Angeles CA 90027

### 5 Fatburger

**OUR LOCAL EXPERT SAYS:**

This great fast food joint is located in a tiny building in the middle of the supermarket parking lot.

**DESCRIPTION: The Scene**

This is a fast-food joint all the way: Order at the counter and employees, sans headphones, bark the order to the fry cooks. Retro jukeboxes usually hold court in the middle of the restaurants, but are rarely used, since jazz and R&B are always piped in through speakers.



Photo courtesy of SimonDoggett

---

### The Food

Sure, there's the grilled chicken sandwich and the chili dog, but other than that, it's all burgers. Wrapped in paper, served on plastic trays and dripping with toppings--mustard, mayo, relish, tomatoes, lettuce and onion--these burgers are definitely fat. Add cheese, bacon and a fried egg and you've got a hefty, cholesterol-laden treat. Or go the healthy route and order the turkey burger with everything; it's almost as good as the red-meat variety, and just as messy. Skip the ordinary fries and order a side of the fresh onion rings--the grease factor is low, and the crispy, golden batter is delicious. © wcities.com

---

#### contact:

tel: +1 323 663 7758  
[http://www.golf.lacity.org/cdp\\_los\\_feliz.htm](http://www.golf.lacity.org/cdp_los_feliz.htm)

#### location:

3207 Los Feliz Boulevard  
Los Angeles CA 90027



## Los Feliz Municipal Golf Course

**DESCRIPTION:** This popular nine-hole, par three course offers the ideal opportunity to either practice your short game or simply enjoy a modest golfing experience. Since being featured in the cult film *Swingers*, it has become a regular destination of locals, celebrities and tourists. The most prominent hazards are the numerous trees, which line every fairway. The greens tend to vary greatly in terms of slope and speed, which provides a great opportunity to brush up on your putting before venturing out onto the city's larger courses. © wcities.com



Photo courtesy of the City of Los Angeles Department of Recreation & Parks

# Los Angeles Snapshot

## Local Info

People either love it, or they hate it--but no matter what, Los Angeles makes no excuses and changes itself for no one. And you've got to admire that. Made up of dozens of communities, there is no one single experience that can sum up the life and the heartbeat of this city. But what can be noticed about Los Angeles by both tourists and locals alike is the hustle-and-bustle lifestyle, the vibrant and unique neighborhoods, and the extreme diversity that sets it apart from any other city. From the eternal sunshine and Hollywood glitz to all the small communities with their own distinct cultural personalities, this City of Angels will forever be many things to many people.

## Downtown

While not exactly in the center of town geographically due to the sprawling nature of the city, Downtown Los Angeles is still teeming with activity. There are cultural hotbeds like Olvera Street and Chinatown that are just minutes away from Los Angeles landmarks such as the Bank of America Building and the Walt Disney Concert Hall. And if you have a hankering for more art and culture while Downtown, the Museum of Contemporary Art(MOCA) is a definite must-see.

## Hollywood

The big sign just about says it all--Hollywood is glitz, glamour, and unavoidable. While many people are critical of Hollywood, they still can't help but satiate their curiosity by visiting this busy area. The center of things is, without a doubt, Hollywood Boulevard, location of world-famous tourist spots including Mann's Chinese Theater, the Hollywood Walk of Fame, and the Kodak Theatre where the Oscars are now held annually.

The Miracle Mile/Hancock Park area is another of L.A.'s historical neighborhoods. Here you will find Wilshire Boulevard's Museum Row. The museums are contained within Hancock Park, a small but peaceful oasis in the center of hectic urban activity. To venture into the far distant past, stop by the Brea Tar Pits, La, and to immerse yourself in a famous museum, the LACMA: Los Angeles County Museum of Art is a popular attraction on Miracle Mile.

Ritz West Hollywood is home to one of the city's most famous(or infamous) attractions: the Sunset Strip. Here you'll find most of the city's hippest clubs frequented by up-and-coming actors and socialites, as well as some of the city's finest hotels and shopping, including the upscale Melrose Avenue Shopping District. West Hollywood is also the center of the city's gay and lesbian community, and it puts on one of the flashiest and most exhilarating annual Halloween parades in the state.

## Beverly Hills and the Westside

This world-famous city with its world-famous zip code is synonymous with wealth, status, and celebrity. The understated elegance and grace of the residential neighborhoods are balanced out by Rodeo Drive, which offers some of the finest(and most expensive) shopping in the world.

## Santa Monica and Beach Cities

Back in the heyday of Route 66, Santa Monica was the end of the line. Today, this beachfront community offers the best in entertainment for all ages on its famous Santa Monica Pier. You can enjoy some carnival-style food and games or take a ride on the ferris wheel for a breathtaking view of the city and shoreline. When you're ready for some shopping, the active Third Street Promenade has a diverse directory of stores and eateries.

The motto of the coastal community of Malibu is "27 miles of scenic beauty," and that about describes it best. The main attraction here is the drive along the Pacific Coast Highway, which takes you past beach after beach on one side of the road and million-dollar hilltop estates on the other. Make sure you have plenty of film and sunscreen. Even at night, the stars just seem brighter.

Venice, just south of Santa Monica, is the city's home to all things eclectic and many things downright bizarre. This small, artsy beach town offers one of the greatest collections of cafes, bars, galleries, antiques and one-of-a-kind shops around. Weekend afternoons on the boardwalk are definitely a memorable experience for any visitor to the city.

## San Fernando Valley

On the other side of the Hollywood Hills sits "The Valley," as known by locals. It features a seemingly endless sea of suburban cul-de-sacs, strip malls, funky shops and restaurants. Hollywood makes its presence known in the cities of Burbank and Universal City, which are home to Warner Bros. Studio and Universal Studios. There are two things you can always count on in the Valley: the earthquakes always feel stronger, and the temperature is always 10 degrees hotter.

## South Central and Compton

Although the South Central neighborhood of Crenshaw gained worldwide publicity as the center of the infamous 1992 riots, this area is rich in history and culture. South Central also is home to famous Los Angeles landmarks such as the Watts Towers, the historic Shrine Auditorium, and Exposition Park. Within the famed Exposition Park is the Los Angeles Memorial Coliseum, the Natural History Museum of Los Angeles County, the California Science Center, and the IMAX California Science Center. It has also long been a place of culture and diversity, as evidenced by the African American Cultural Center.

## Long Beach and the South Bay

Long Beach is a fairly large city in its own right and is a neighbor to the well known district of Orange County. Aside from a plethora of shopping and dining options, this beach community is perhaps best known for the Queen Mary, a Titanic-esque ocean liner now permanently docked here and open for tours. They also have many outdoor activities for tourists to take advantage of, as well as museums and beaches that all can enjoy.

The South Bay is made up of smaller beach towns and quiet neighborhoods such as Hermosa Beach, Redondo Beach, Manhattan Beach and Palos Verdes Estates.

## Pasadena and Points East

Pasadena is one of the most prominent communities in the entire state of California. Old Town Pasadena provides one of the greatest clusters of bars, shops, cafes and restaurants in the entire L.A. area. The city is also known for the Norton Simon Museum, which is the largest collection

## Los Angeles Snapshot continued

of art owned by one man, and the Rose Bowl. And every New Years' Day, this not-so-sleepy town becomes the focus of the entire world for the annual Tournament of Roses Parade.

East L.A., as evidenced by its name, forms the eastern edge of the city and is a great example of a neighborhood rich in cultural expression.

### LAX and Inglewood

LAX is one of the largest airports in the United States, when it comes to the sheer number of people passing through its hallways. The airport is the main feature of the otherwise-sleepy, suburban neighborhood of Westchester. This pocket of quiet, tree-lined streets and neighborhood schools and churches is a refreshing oasis in an often-frenetic city.

Inglewood features a wide variety of restaurants, music and sports venues. Here you will find Hollywood Park Racetrack and the The Forum arena, an entertainment hotspot. Inglewood also hosts the annual Hollywood Black Film Festival, which pays homage to African-American filmmakers of past, present and future.

©