



nileGUIDE

ALL YOU NEED TO PLAN YOUR PERFECT TRIP



First Time in Salt Lake City Guide

Salt Lake City, Park City, 4 Days

Table of contents:

Guide Description	2
Itinerary Overview	3
Daily Itineraries	5
Salt Lake City Snapshot	18
Park City Snapshot	19

Guide Description



AUTHOR NOTE: Salt Lake City is home to the Church of Jesus Christ of Latter Day Saints (Mormons) and unparalleled outdoor recreation opportunities. Church buildings dominate the downtown landscape leaving the city center with a relatively conservative feel. Dotted with trendy restaurants, quaint shops, and local pubs, the Sugar House and Avenues neighborhoods give off a more liberal vibe.

View some city sights such as the Temple Square and then head up to the Wasatch Mountains to ski at one of the four world-famous resorts located just a 45-minute drive from the city center. In summer, explore the canyons on mountain bike or foot and then enjoy a locally brewed beer and some pub food at one of the popular canyon bars.

No trip to Salt Lake is complete without a trip out to the Great Salt Lake; find excellent viewpoints at either Antelope Island State Park or the Great Salt Lake Park.

Itinerary Overview

things to do
restaurants
hotels
nightlife

Day 1 - Park City, Salt Lake City

DAY NOTE: THINGS TO DO

Chances are your first trip to Salt Lake City is to ski. Snowbird boasts the most challenging and hardcore terrain and Alta offers a unique skier's only experience. Brighton is best for families and snowboarders whereas Solitude claims the shortest lift lines and a wide variety of terrain. On a rest day grab a bus from the resorts and head downtown to explore the city sights with a tour of Temple Square and a stroll up Memory Grove Park. A car is a must to get out to the Great Salt Lake and explore neighboring Park City's historic Main Street.



Solitude Mountain Resort

Salt Lake's most peaceful mountain resort



Brighton Ski Resort

Family oriented ski resort located up Big Cottonwood Canyon



Temple Square

Church museums, sacred buildings, and beautiful gardens



Antelope Island State Park

The Great Salt Lake's Largest Island



Great Salt Lake State Marina

Go for a float in the fourth largest salt lake in the world



Memory Grove Park

A quiet, peaceful park just steps from the city center



Park City Historic Main Street

Home of the Sundance Film Festival and best restaurants in Utah

Day 2 - Salt Lake City

DAY NOTE: RESTAURANTS

Salt Lake City offers a diverse mix of cuisine from authentic Mexican to fine seafood and pastas to a host of family friendly home cooking eateries. Visit Squatters Pub to get a sampling of one of Salt Lake City's phenomenal microbreweries and enjoy fine seafood flown in daily at Market Street Grill. For some killer Mexican try out the Blue Iguana or for the softer palate and a taste of Utah history check out Lamb's Grill and Café on Main.

Ruth's Diner serves up the best in breakfast with mile high biscuits in a gorgeous canyon setting.



Squatters Pub Brewery

Salt Lake City's favorite brew pub with award winning brews



Market Street Grill

Salt Lake's finest seafood restaurant featuring a seasonal menu



Blue Iguana

Home of the hardcore Mexican experience



Lamb's Grill Cafe

Salt Lake City's oldest restaurant



Ruth's Diner

Home cooking diner with killer biscuits, a Salt Lake City classic

Day 3 - Park City, Salt Lake City

DAY NOTE: NIGHTLIFE

For many years Salt Lake City and nightlife was an oxymoron but a recent loosening of Utah liquor laws is fueling a boom in Salt Lake's nightlife offerings. As of July 2009, membership cards are no longer needed to drink in a Utah bar making bar hopping actually feasible. The ski resorts are the most happening place so check out one of the bars après ski, plus new bars are popping up on Main giving hope to the relatively dry downtown.



Alta's Peruvian Bar

Locals favorite après ski bar at Alta Ski Area



Tram Club

Snowbird's most happening ski bar



Red Door (The)

Speciality martinis, whiskeys, and fine wines



Green Street Social Club

Huge club with pool tables, live music room, patio, and chill den



Brewvies Cinema Pub

Itinerary Overview

things to do
restaurants
hotels
nightlife

Beer, vegetarian friendly pub food, and big-screen movies

Day 4 - Salt Lake City

DAY NOTE: LOCAL RECOMMENDATION: FAMILY FUN

Salt Lake City has to be one of the most family friendly destinations in the entire United States. All the ski resorts offer lesson packages for kids and many of the top city sights are catered towards children such as the zoo, parks, children's museum, and the planetarium. Restaurants are also kid friendly unless they are considered a lounge and in that case patrons must be 21 years or older to enter.



This Is The Place Heritage Park

Blacksmiths, petting zoos, and pioneer crafts



Liberty Park

Salt Lake City's most popular and favorite city park



Hogle Zoo

Utah's largest zoo located at the base of Emigration Canyon



Clark Planetarium

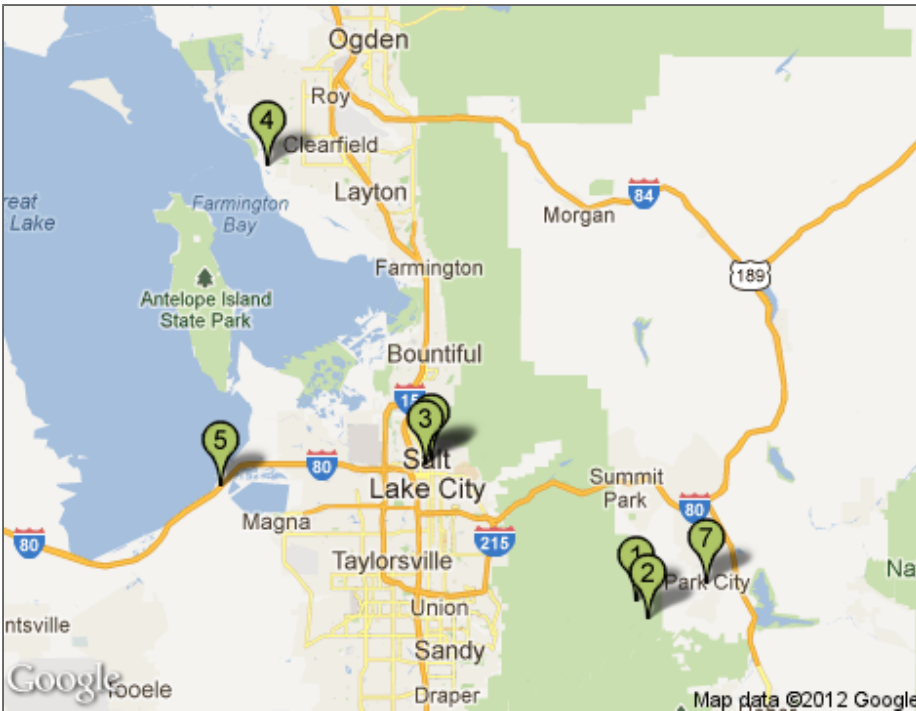
Planetarium, IMAX, and Cosmic Light Shows at the Gateway Mall



Wheeler Historic Farm

Historic farm representing farming life in Utah from 1890-1920

Day 1 - Park City, Salt Lake City



QUICK NOTE

DAY NOTE: THINGS TO DO

Chances are your first trip to Salt Lake City is to ski. Snowbird boasts the most challenging and hardcore terrain and Alta offers a unique skier's only experience. Brighton is best for families and snowboarders whereas Solitude claims the shortest lift lines and a wide variety of terrain. On a rest day grab a bus from the resorts and head downtown to explore the city sights with a tour of Temple Square and a stroll up Memory Grove Park. A car is a must to get out to the Great Salt Lake and explore neighboring Park City's historic Main Street.

contact:
tel: +1 801 534 1400
fax: +1 435 649 5276
<http://www.skisolitude.com>

location:
12000 Big Cottonwood
Canyon
Solitude UT 84121

1 Solitude Mountain Resort

OUR LOCAL EXPERT SAYS:

During the summer months, a great place for moose sightings is on the Silver Lake trail. Park at Solitude's Nordic Center and follow the boardwalk for an easy yet beautiful and relaxing hike around Silver Lake.

DESCRIPTION: Solitude Mountain Resort along with nearby Brighton Ski Resort are lesser-known (and usually less crowded) destinations than the larger resorts in Park City and in Little Cottonwood Canyon, but offer great skiing and summer activities and good value. Solitude and Brighton, located in Big Cottonwood Canyon, are close to downtown and only about 40 minutes from the airport. Solitude offers a quaint pedestrian village with shops and restaurants, and new condos available for nightly or weekly rental. Solitude's recently-added high-speed quad lifts get the ski day started fast for guests staying in the local village. Summer at Solitude features a mountain



Photo courtesy of Solitude Mountain Resort

Frisbee-golf course: ride up the chair lift, throw (and chase) your Frisbee down the rugged terrain through 18 wickets.
© NileGuide

contact:
tel: +1 801 532 4731
fax: +1 435 649 1787
<http://www.skibrighnton.com>

location:
12601 East Big Cottonwood Canyon Road
Brighton UT 84121

2 Brighton Ski Resort

DESCRIPTION: Located just 25 miles (40 kilometers) southeast of the city, this Cottonwood Canyon resort bills itself as a family-friendly resort. Catering to young families and snowboarding enthusiasts, Brighton Ski Resort's low lift pass prices, high altitude and 500 inches-per-year snowfall average keeps its runs busy. A half-pipe is available, night skiing is offered, and adapted skiing lessons are also available for disabled skiers. Check website for prices and further details.
© wcities.com



Photo courtesy of Brighton Ski Resort

contact:
tel: +1 801 240 3323
<http://www.visittemplesquare.com/index.asp>

location:
50 West North Temple
Salt Lake City UT 84103

3 Temple Square

DESCRIPTION: Temple Square is the number-one tourist attraction in the state of Utah, attracting 3-5 million visitors each year. And for the 13 million Latter-day Saints around the world, this is the historic and spiritual center of the church.
The downtown destination is the home of the iconic Salt Lake Temple, the Mormon Tabernacle, the Assembly Hall, two large Visitors Centers, the Joseph Smith Memorial Building, and the 20,000 seat Conference Center. On one weekend each April and October, the Square buzzes with tens of thousands of Mormon visitors from around the world for the church's semi-annual General Conference.
During the holiday season, the well-manicured trees and buildings are lit beautifully and become a magnet for couples contemplating a wedding at the temple in the spring.
Throughout the year, free concerts are held at the Tabernacle and the adjacent Assembly Hall, every Sunday morning the Tabernacle Choir performs its weekly "Music and the Spoken Word" program free for the public, and a variety of free films and expositions are shown in the neighboring Joseph Smith Memorial Building.
Did we mention that all of this is available at no cost? Volunteering Mormon missionaries on the square will smilingly offer explanations and answer questions about the faith – and that's free too.
© NileGuide



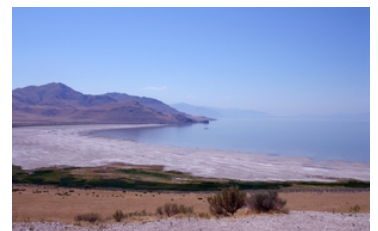
wcities

contact:
tel: +1 801 652 2043
http://www.utah.com/stateparks/antelope_island.htm

location:
4528 West 1700 South
Syracuse UT 84075

4 Antelope Island State Park

OUR LOCAL EXPERT SAYS:
Visit Antelope Island in late October for the yearly buffalo roundup. The buffalo are driven into corrals for their yearly checkup by volunteer horsemen and helicopter and is quite a sight to see.



wcities

DESCRIPTION: The Great Salt Lake has a salinity roughly 10 times that of ocean water. It's shallow and generally hard to interact with. However, it has a unique beauty worth checking out. One of the best ways to explore the Great Salt Lake and its natural environs is to take a trip to Antelope Island State Park. This island, hardly developed at all, allows you to envision what the shores of the Great Salt Lake looked like hundreds of years ago, before millions of people lived in Utah. Visit the historic farm built by settlers 150+ years ago. Or try to catch a glimpse the island's free-roaming buffalo heard; every October a roundup to help thin the heard before the winter months. Take a hike or a mountain bike ride along the island's trails. Though only about 20 miles northwest of Salt Lake City as the crow flies, Antelope Island actually requires about 45 miles of driving to reach. First head north on I-15 into Syracuse, then take Exit 335 and head west, following signs for Antelope Island State Park. During late May of every year, the Salt Lake Century bike tour rides north from Salt Lake City and onto Antelope Island before heading back south. © NileGuide

contact:
tel: +1 801 250 1898
http://www.utah.com/stateparks/great_salt_lake.htm

location:
13312 West 1075 South
Magna UT 84044

5 Great Salt Lake State Marina

DESCRIPTION: Great Salt Lake State Park has been popular with bathers since the Mormon Pioneers first arrived in the basin in the middle of the 19th century. Although no swimming ability is necessary (the high salt content of the water keeps even non-swimmers afloat), bathers should be aware that the super-salty water may irritate throat, eyes and nose. A small visitors' center offers a museum, local information and a video about the lake, while the private SaltAir development provides a few shops, some food outlets and space for concerts and other events. © wcities.com



Photo courtesy of Great Salt Lake State Park

contact:
tel: +1 801 972 7800

location:
300 N E Capitol Boulevard
Salt Lake City UT 84103

6 Memory Grove Park

DESCRIPTION: This beautiful park, dedicated to the veterans of Utah, is refreshingly quiet and serene. The towering trees throughout and the Harbor of Beauty pond create a feeling of peacefulness for those who just want a quiet, meditative walk in the park. On the east bank is the Freedom Trail. On the west, the paved path goes all the way up to City Creek Canyon. The park is dog-friendly as long as pets are leashed—however, owners may unleash dogs in the canyon. © wcities.com



atp_tyreseus

contact:

tel: +1 435 658 9616
<http://www.parkcityinformation.org/mainstreetparkcity.htm>

location:

Main Street
Park City UT 84060



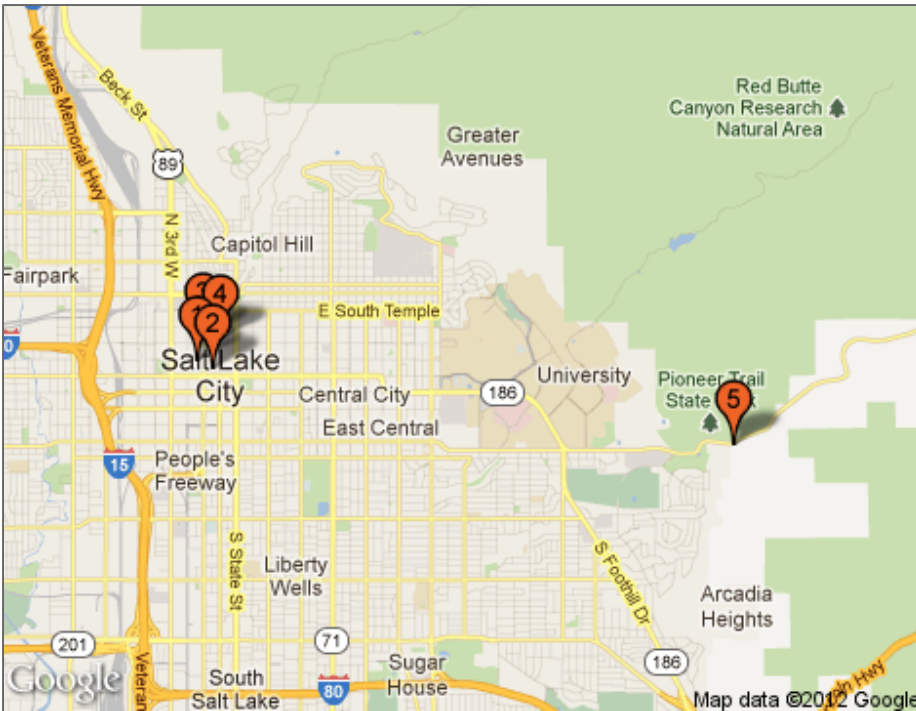
Park City Historic Main Street

DESCRIPTION: Park City's Historic Main Street is the quaint and eclectic home of unique retail shops, art galleries, popular bars and private clubs, and some of the best restaurants in the state of Utah. Originally a 19th Century mining town, Park City's center has quite an historic feel. Set on an incline below the base of the Park City Mountain Resort, Main Street is easily accessible on foot from the ski slopes, or free Park City buses deliver visitors here from various points around town. January's Sundance Film Festival and August's Kimball Arts Festival are two of the annual highlights, but every weekend night the street is hopping with locals mingling with visitors from around the world. To check out the history of this town, stop in at the Park City Old Town Museum and Territorial Jail.
© NileGuide



Photo courtesy of Park City Historic Main Street

Day 2 - Salt Lake City



QUICK NOTE

DAY NOTE: RESTAURANTS

Salt Lake City offers a diverse mix of cuisine from authentic Mexican to fine seafood and pastas to a host of family friendly home cooking eateries. Visit Squatters Pub to get a sampling of one of Salt Lake City's phenomenal microbreweries and enjoy fine seafood flown in daily at Market Street Grill. For some killer Mexican try out the Blue Iguana or for the softer palate and a taste of Utah history check out Lamb's Grill and Café on Main. Ruth's Diner serves up the best in breakfast with mile high biscuits in a gorgeous canyon setting.

contact:

tel: +1 801 363 2739

<http://www.squatters.com/>

location:

147 West Broadway
Salt Lake City UT 84101

hours:

M-Th 11a-Mid, F 11a-1a, Sa
10:30a-1a, Su 10:30a-Mid

1 Squatters Pub Brewery

OUR LOCAL EXPERT SAYS:

Apparel and collectibles from Squatter's gift shop make great gifts for family and friends that had to stay at home.

DESCRIPTION: Located on the western end of downtown, this two-story brewpub has been a consistent Salt Lake Favorite for years. On the menu are its many staple and seasonal beers -both on tap (3.2% alcohol by weight) and full-strength in the bottle. The food offerings range from fish-and-chips to curry, steaks, to salads.

With table and bar seating both upstairs and down, this can be a place for a more "serious" dinner, or a quick snack and beer with friends. Located in a renovated brick structure, it has a classic, upscale brewpub feel. During the summer months, its outdoor patio opens, allowing for pleasant outdoor dining.

© NileGuide



contact:

tel: 8013224668
fax: +1 801 531 0730
www.marketstreetgrill.com

location:

48 Market Street
Salt Lake City UT 84101

hours:

Breakfast: Monday - Friday:
6:30am - 11:00am, Saturday:
7:00am - 12:00pm; Lunch:
Monday - Friday: 11:00am -
3:00pm, Saturday: 12:00pm
- 3:00pm; Dinner: Monday -
Thursday: 5:00pm - 10:00pm,
Friday: 5:00pm - 11:00pm,
Saturday: 4:00pm - 11:00pm;
Sunday Brunch: 9:00am -
3:00pm

2 Market Street Grill

DESCRIPTION: The Market Street Grill Downtown is the unanimous favorite of locals and visitors from around the world. Reminiscent of the grills of the 1930s with a long counter, bead board, and tile floors, we have been impressing customers since 1980 in the historic 1906 New York Hotel. Serving breakfast, lunch, dinner and Sunday brunch, the menu offers something for everyone. A variety of fresh seafood flown in daily from around the world, tender steaks, prime rib, pastas, sandwiches, crispy salads, and delectable fresh baked desserts. The Market Street Grill serves only the highest quality ingredients available. Zagat has rated The Market Street Grill Downtown as SLC's #1 most popular restaurant. The Grill is consistently voted "best seafood," "best desserts" and "best breakfast" and is the recipient of the Wine Spectator "Award of Excellence." Located in the heart of downtown SLC, The Market Street Grill is within easy walking distance of all major hotels and entertainment venues. © wcities.com



wcities

contact:

tel: +1 801 533 8900
fax: +1 801 533 8900
http://www.blueiguanarestaurant.net

location:

165 South West Temple
Salt Lake City UT 84101

hours:

M-Th 11:30a-9p, F
11:30a-10p, Sa noon-10p, Su
4p-9p

3 Blue Iguana

DESCRIPTION: Billing itself as "home of the hardcore Mexican food," the entrees are daring and feature unusual varieties of mole sauces. Knowledgeable servers will help you select the combination of sauces and level of spiciness that is right for you. Enjoy indoor or patio dining, or take advantage of the complete take-out menu. A full liquor license is available, so patrons can enjoy beer, wine, or mixed drinks with their meals. © wcities.com



wcities

contact:

tel: +1 801 364 7166
fax: +1 801 355 1644
http://lambgrill.com/

location:

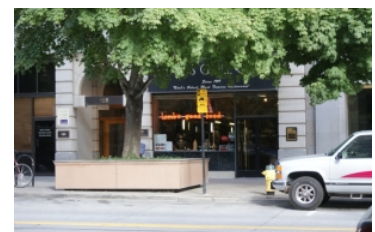
169 South Main
Salt Lake City UT 84111

hours:

Mon-Fri 7AM-9PM, Sat
8AM-9PM

4 Lamb's Grill Cafe

DESCRIPTION: Unlike theme restaurants posing as authentic, this is the real deal. Founded by Greek immigrant George P. Lamb, the restaurant he started in northern Utah in 1919 moved to the city in 1939. Patrons enjoy excellent and truly classic American cuisine here. For breakfast, lunch, or dinner, this is the best place for both atmosphere and people-watching; it is a favorite spot of the city's politicians, businesspeople, and other celebrities. A full-service bar complements entrees and a la carte items, and service is beyond excellent. © wcities.com



wcities

contact:

tel: +1 801 582 5807
http://www.ruthsdiner.com

location:

2100 Emigration Canyon
Salt Lake City UT 84108

hours:

M-Th 8a-9p, F-Sa 8a-10p, Su
8a-9p

5 Ruth's Diner

OUR LOCAL EXPERT SAYS:

For breakfast, visit during the weekdays if you can. Ruth's is just as popular with locals as it is with visitors and it is not uncommon to have to wait over an hour for a table on the weekends.

DESCRIPTION: In a city with a strong, conservative tradition, Ruth was an early rebel. Originally serving burgers downtown during the 1930s, Ruth was known to help protect girls "of ill repute" and had no qualms about serving beers to miners and other "gentiles". Almost literally driven from town, she set up her new diner a few miles up Emigration Canyon in an old boxcar.

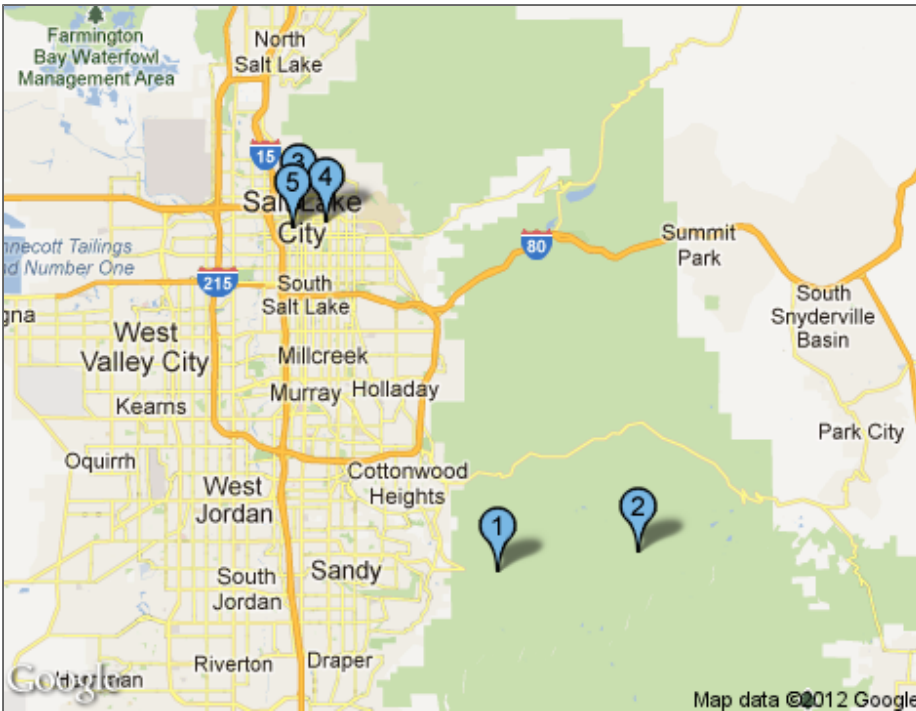
Though Ruth has since passed, her restaurant lives on today as one of Salt Lake City's favorite breakfast joints. Serving high-end, high-quantity diner food, this restaurant starts every breakfast with a serving of "mile high biscuits" that are to die for. Come a bit later for lunch and take a beer outdoors! Located right on a popular road biking route, many enjoy a hearty meal outside in the summer months.

© NileGuide



Aaron Gustafson

Day 3 - Park City, Salt Lake City



QUICK NOTE

DAY NOTE: NIGHTLIFE

For many years Salt Lake City and nightlife was an oxymoron but a recent loosening of Utah liquor laws is fueling a boom in Salt Lake's nightlife offerings. As of July 2009, membership cards are no longer needed to drink in a Utah bar making bar hopping actually feasible. The ski resorts are the most happening place so check out one of the bars après ski, plus new bars are popping up on Main giving hope to the relatively dry downtown.

contact:
tel: (801) 742-3000
<http://www.altaperuvian.com/lodge/bar.htm#>

location:
Little Cottonwood Canyon Rd
Alta UT 84092

hours:
Mon-Sun during ski season
4:30PM-11PM

1 Alta's Peruvian Bar

DESCRIPTION: Alta's Peruvian Bar is a favorite among Alta's die-hard ski bum crowd. The cozy, western-themed bar offers complimentary appetizers and popcorn and thus attracts colorful local characters seeking cold libations, free food, and lively conversation. With great views of Alta's impressive peaks and a welcoming fireplace, the Peruvian Bar just may be the best place to unwind after a sweet day on the slopes. Also a great place to score some great insider ski tips from the locals. Located near the entrance to Alta's Wildcat base area, the Peruvian bar is located in the charming, rustic Alta Peruvian Lodge. Like all Utah bars, entrance is limited to guests 21 and over.
© NileGuide



Photo courtesy of Peruvian Bar.

contact:
tel: (801) 933-2222

location:
Little Cottonwood Rd
Snowbird UT 84138

hours:
Mon-Sun during the ski
season 12PM-12AM

2 Tram Club

OUR LOCAL EXPERT SAYS:

Ask the bartender about the beer and a shot special. Buy a shot and your beer is only a dollar.

DESCRIPTION: The absolute most happening place to be after a day of skiing on Snowbird's famed slopes. The Tram Club is always lively with pool tables, live music, and loads of special events and parties The Tram Club is also the best place to catch your favorite game with 12 flat screen TVs and several projection screens there isn't a bad seat in the house.

The Tram Club is located on the ground floor of the Snowbird Center right next to the Steak Pit. The club holds the gears of the Snowbird Tram and you can view the Tram in action through the glass windows in the bar.

Also open during the summer months, the Tram Club has a beautiful patio located at the base of the mountain.

© NileGuide

contact:
tel: +1 801 363 6030
<http://www.behindthereddoor.com/>

location:
57 West 200 South
Salt Lake City UT 84101

hours:
M-Tu 6p-1a, W-F 5p-1a, Sa
6p-1a

3 Red Door (The)

DESCRIPTION: For a swanky evening sipping martinis and chatting in overstuffed chairs, head to the Red Door. This small bar has a dark, sexy ambiance that goes well as an after-dinner treat, or a post-show drink. Though it gets very busy, it's rarely gets loud, so it's a great venue for hanging with a small group of friends. Beware: though the atmosphere is cool, the service can be quite slow -so don't head here if you're in a rush to get in and out.

Located right downtown, so can easily be taken in combination with other activities -and is totally within walking distance of the hotel district.

© NileGuide



citysearch

contact:
tel: +1 801 532 4200
<http://www.greenstreetslc.com/>

location:
602 East 500 South
Salt Lake City UT 84102

4 Green Street Social Club

OUR LOCAL EXPERT SAYS:

Be forewarned Green Street tends to pat down their patrons before they are admitted. If getting frisked and excessive security makes you uncomfortable there are plenty of other clubs to choose from.

DESCRIPTION: Featuring a patio, dance floor, cigar room and pool tables, this club is sure to deliver. Tuesdays feature pianist Dave Compton; Wednesdays, live jazz; Thursdays, karaoke; Fridays, retro '70s, '80s, and '90s; Saturdays, live local bands; and Sundays, live acoustic tunes. Free pool is offered on Sundays. This club also offers full bar service. Dress code is enforced—no hats, T-shirts, or cut-off jeans are permitted. Casual dress is appropriate. © wcities.com



wcities

contact:

tel: +1 801 355 5500
<http://www.brewvies.com/>

location:

677 South 200 West
Salt Lake City UT 84101

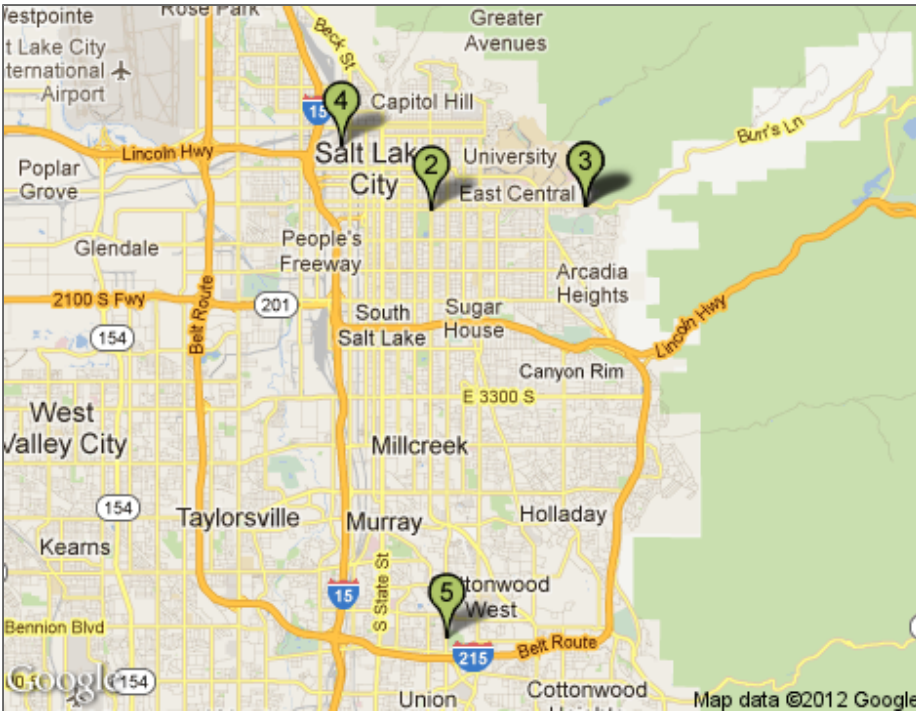
5 Brewvies Cinema Pub

DESCRIPTION: One of Salt Lake's most genius establishments, Brewvies is a beer bar, finger food restaurant, and movie theater all rolled into one! Though you won't catch the latest in films, Brewvies does get its hands on some relatively new releases, played in each of their two, 150-seater theaters. Grab one of the 18 beers, a burger (or salad), and enjoy the film! If you get there early enough, you can grab one of the couches in the back and really relax. Located in one of the country's biggest outdoorsy towns, this will often screen ski, mountain bike, and climbing films.
© NileGuide



wcities

Day 4 - Salt Lake City



QUICK NOTE

DAY NOTE: LOCAL RECOMMENDATION: FAMILY FUN

Salt Lake City has to be one of the most family friendly destinations in the entire United States. All the ski resorts offer lesson packages for kids and many of the top city sights are catered towards children such as the zoo, parks, children's museum, and the planetarium. Restaurants are also kid friendly unless they are considered a lounge and in that case patrons must be 21 years or older to enter.

contact:
tel: +1 801 582 1847
<http://www.thisistheplace.org>

location:
2601 E. Sunnyside Ave
Salt Lake City UT 84108

hours:
Park daily dawn-dusk; visitor center Mon-Sat 9am-6pm; Heritage Village summer daily Mon-Sat 9am-5pm, call for off season hours

1 This Is The Place Heritage Park

OUR LOCAL EXPERT SAYS:

Visit This is the Place's haunted village in October. Stroll through the park's haunted buildings and ghostly streets and beware the headless horseman.

DESCRIPTION: Brigham Young and the Mormon pioneers got their first glimpse of the Salt Lake Valley at the site of this historic park. A tall granite and bronze sculpture was erected in 1947 to commemorate the centennial of their arrival. The park, which covers more than 1,600 acres, offers hiking along part of the trail used by the pioneers, with opportunities for cross-country skiing in winter. This is a good place for wildlife viewing and birding in winter and spring, with additional songbirds and raptors present in summer and fall. There's a picnic area, but no camping, and a visitor center contains exhibits depicting the Mormon pioneers' trek from Illinois to the Great Salt Lake Valley in 1847. Also in the park, **Heritage Village** is a pioneer village comprised of original buildings from across the state along with some reproductions. In summer and during special events it



wcities

becomes a living-history museum of the period from 1847 to 1869, with costumed villagers and a variety of demonstrations and activities, including wagon rides. Allow 1 to 2 hours. For a week each December the village re-creates a pioneer Christmas celebration. © Frommer's

contact:

tel: +1 801 521 0962

location:

1100 South 600 East
Salt Lake City UT 84105

hours:

Park daily 6am-11pm (dawn-dusk in winter). Museum Mon-Thurs noon-5pm and Fri-Sun 2-7pm Memorial Day to Labor Day; Sat-Sun noon-5pm Apr to Memorial Day and Labor Day to Oct. Tracy Aviary daily 9am-6pm

2 Liberty Park

DESCRIPTION: This delightful city park has trails for walking and jogging, tennis courts, a small lake with ducks and paddleboat rentals, picnic facilities, a playground, a children's garden, a children's amusement park, a museum, and an excellent aviary. Covering 100 acres, this is a favorite gathering spot for locals, as well as one of the best dog-walking areas in the city (dogs must be leashed and owners must clean up after them). In the park, the **Chase Home Museum of Utah Folk Arts** (tel. **801/533-5760**), in the historic Brigham Young/Chase home, contains exhibits of pioneer art, American Indian art, and folk art. Allow a half-hour. **Tracy Aviary** (tel. **801/596-8500**; www.tracyaviary.org), in the southwest section of the park, has more than 400 birds, including a number of endangered species. There's a special exhibit of Australian parrots called lorries (\$1.50 extra per person), and free-flying bird shows are presented during the summer (call for schedule). Allow at least 1 hour. © Frommer's



wcities

contact:

tel: +1 801 582 1631
<http://www.hoglezoo.org>

location:

2600 East Sunnyside Avenue
840 South
Salt Lake City UT 84108

3 Hogle Zoo

DESCRIPTION: Every major city has a zoo, and this is Salt Lake City's. Situated on the northeastern end of town, at the mouth of Emigration Canyon, this houses a huge spectrum of animals, fish, insects, and arachnids. Here you'll find everything from camels to elephants, snakes to bears. Open all year, this is best visited during the warmer months when it's pleasant enough for all of the animals to be outside! No charge for children two and under.

Open since 1931 and operating in the same location, this zoo has served as a community education center, supporting school outings, and offering education programs and zoo classes. This isn't just restricted to toddlers; different classes are designed to inform those from a young age through adulthood. Check online for the program listing.

Just across from the Hogle Zoo (to the north) is one of the many trail heads for the Bonneville Shoreline system. © NileGuide



wcities

contact:

tel: +1 801 456 7827
http://www.clarkplanetarium.org/

location:

110 S. 400 West
Salt Lake City UT 84101-1145

hours:

Mon-Thurs 11am-9pm; Fri-Sat 11am-midnight; Sun 11am-8pm

4 Clark Planetarium

OUR LOCAL EXPERT SAYS:

Not just for kids, the Clark Planetarium features trippy laser light show experiences late night on weekends. Shows feature music by such bands as U2 and Pink Floyd.

DESCRIPTION: This state-of-the-art planetarium presents laser light shows and big-screen movies in Utah's only 3-D IMAX theater. It also contains a variety of interactive exhibits ranging from a display about the names of the planets to a Foucault pendulum, plus a rotating relief globe. Allow up to 3 hours. © Frommer's



wcities

contact:

tel: +1 801 264 2241
fax: +1 801 264 2213
http://www.wheelerfarm.com/

location:

6351 S. 900 East
Salt Lake City UT 84121-2241

hours:

Daily dawn-dusk

5 Wheeler Historic Farm

OUR LOCAL EXPERT SAYS:

Kids can experience firsthand what it is like to milk a cow. Visit the farm for chore times Monday through Saturday at 5pm.

DESCRIPTION: This living-history dairy farm, where you can see demonstrations of farming and daily activities from the late 19th century, features hundred-year-old farm buildings, a small petting zoo, and a nature preserve. Activities include experiencing various farm chores, such as egg gathering and cow milking, farmhouse tours, and tractor-driven wagon rides. Allow 1 to 2 hours. A variety of annual events is also offered, including a scarecrow masquerade, a holiday lights festival, breakfast with Santa, and a summer camp week. © Frommer's



wcities

Salt Lake City Snapshot

Local Info

Salt Lake City, Utah's capital, sits snugly against the base of the soaring Wasatch Mountains. These dramatic Rocky Mountain peaks today define Salt Lake City equally as much as its founding by the Mormons in 1848. And though a lot of strange urban legends circulate, the Mormon church (Church of Jesus Christ of Latter-day Saints) certainly exerts a much more subdued and positive influence on the city than the fearful would believe.

By any standards, Salt Lake City is a fairly young city—at just more than 160 years old. But it is one of the nation's most historically unique modern cities, having grown up in a territory peppered with sometimes bloody battles between Mormons and "gentiles". Of course this history and cultural background still effect Utah, but so too do many other factors like its magnificent outdoor opportunities and remarkably stable economy. Salt Lake's modern visitors and residents come for all sorts of reasons and enjoy an equally diverse set of opportunities. Located right at the crossroads of I-80 and I-15, and within

five minutes of a major international airport, it could hardly be more accessible.

Salt Lake's downtown sits at the northern end of Salt Lake Valley. With Utah's largest conference centers and guest capacities, the downtown area also has a host of restaurants, bars, and clubs. The majority of music venues can also be found here, as well as art galleries, cafes, and shops. Some of the highlights here include Market Street and its excellent restaurants like Takashi and Market Street Grill. Front and center are Abravanel Hall, home of the Utah Symphony, and the Energy Solutions Arena, where the Utah Jazz often play.

The University of Utah with its research facilities, galleries, and associated business occupies the city's eastern corner. The general public might head up to campus to hike the Bonneville Shoreline Trail or check out the Red Butte Gardens.

Heading southeast from downtown proper is the 9th and 9th region of town; a small collection of boutique shops, multiple restaurants, a cafe, bakery, and yoga studio. Move farther to the south and you'll run into Sugarhouse, the big brother of 9th and 9th. This dense center is home to a

book shop, a Patagonia Outlet, dollar-style Cinemax movie theater, Salt Lake's latest-open liquor store, restaurants and pubs, as well as several big, national retail stores.

As you head south still, the town becomes increasingly residential, though various malls, retail districts, restaurants, and bars pop up here and there. But even as you spread to the perimeters of town, you will continue to find culinary and commercial gems in each of its various neighborhoods. Toward the far southeastern corner of the valley (and the I-215 beltway) are the mouths to Big and Little Cottonwood canyons and their ski resorts, Brighton and Solitude (in Big), Alta and Snowbird (in Little). Look sharp for restaurants, apres ski spots, and hotels in this area.

Regardless of where you're staying and recreating in Salt Lake City, you'll have easy access to all parts of town via the I-80/I-215 beltway that encircles the majority of the urban compact, rendering almost every corner of town within 25 or 35 minutes of each other.

© NileGuide

Park City Snapshot

Local Info

Located high in the Wasatch Mountains, Park City has always stood apart from the rest of Utah. While Salt Lake City was founded to be the new Mormon Zion, Park City grew up in the gritty business of mining. Park City's mountain town layout and liberated lifestyle have always contrasted with greater Utah's gridded streets and conservative culture. And though Salt Lake has greatly adapted and grown into the modern world, Park City has always maintained a flavor distinct from traditional Utah, drawing from its abundant natural beauty, recreational opportunities, and mountain culture.

Today Park City is world-famous as a ski destination, made so by its three world-class resorts, Park City, The Canyons, and Deer Valley. Each with its own flavor, these ski areas cater to visitors (and residents!) of all ski abilities and leisure tastes. Closely behind its snow sport fame comes its reputation as an incredible mountain biking town. Buffed trails meander over grassy foothills around the valley for cross-country riders; steep, lift-served

downhill courses serve to challenge bikers at the ski resorts.

And in any season, Park City's "city" offers an enormous and condensed amount of cultural and culinary points of interest for any kind of visitor. Home to the Sundance Film Festival, Park City has been visited by nearly every silver screen celebrity during this January event. Whether you want to dine at a world-ranked restaurant or grab a burger at a brew pub, partake in an art stroll or catch an outdoor concert, Park City has you covered. And if you happen to have a bit too much to drink or don't want to bother with parking- you may simply ride any of the free Park City shuttle buses.

Orientation-wise, Park City's Main Street can really be considered the town center. Lining this passageway is a huge representation of the town's galleries, eateries, and boutique shops. This long, narrow road, though open to vehicles, is much better suited to pedestrians than cars. If visiting this area, park in any of the lots just off Main Street and stroll around.

To the north (and near I-80) is Kimball Junction. Quite removed from the center of

Park City, Kimball Junction serves Summit County with larger shops and venues requiring of more space to operate. Here you'll find the famous Tanger Outlets and other, larger box-type stores as well as some modern restaurants.

The three resorts, Deer Valley, The Canyons, and Park City Mountain Resort, function nearly as their own cities, each with restaurants, shops, and equipment rental opportunities. Of the three, The Canyons is located the farthest to the north, between Park City and Kimball Junction. Park City Mountain Resort is situated almost literally off Park City's Main Street. And Deer valley finds itself on the southeastern edge of town.

When planning your visit to Park City, don't consider yourself restricted to winter! This area is happy to host during any season, and is typically less crowded during the summer months. But be sure to book lodging well ahead of time to ensure the right rooms at the right price.

© NileGuide