



nileGUIDE

ALL YOU NEED TO PLAN YOUR PERFECT TRIP



papalars

Two Days in Seattle

Seattle, 2 Days

Table of contents:

- Guide Description 2
- Itinerary Overview 3
- Daily Itineraries 5
- My List 15
- Seattle Snapshot 16

Guide Description



AUTHOR NOTE: If you can only make it into town for the weekend there are a few things you should definitely see. Start out with Pike Place Market, stop by the Seattle Art Museum and then hit the local music scene. Brunch is essential for the morning after then head up to Capital hill for some great views of the city, some shopping, the A*ian Art Museum and a walk in the park.

Itinerary Overview

things to do
restaurants
hotels
nightlife

Day 1 - Seattle

DAY NOTE: Start with a fabulous French Breakfast at Café Campagne or have an English breakfast at Smith then head over to the Frye Art Gallery and check out the latest exhibit. After breakfast you can walk down through Freeway Park to the Seattle Art Museum and then to Pike Place Market. The Market has all the delicious edibles you can imagine. Pick up some white truffle oil or truffle butter from La Buona Tavola, just next door you'll find gourmet herbed vinegars at Sotto Voce. De Laurenti carries hundreds of specialty artisan cheeses and many of them will fare just fine in your hotel fridge until you can get them home. The Pecorinos and Parmesans will last for a month or more so stock up and throw a tasting party when you get home. They also carry an extensive selection of imported meats so you may want to pick up some salami or prosciutto. If you're just interested in some Humboldt Fog and local chevre or camembert, Quality Cheeses is a few dollars less per pound and Thoma is the sweetest cheese man in town. You can find homemade huckleberry jam and fireweed honey on the main floor of the market which make perfect gifts for friends and family and are absolute musts for any well-stocked pantry. Definitely check out Market Spice Tea where you can find an extensive tea selection, perfect herbs de province and Tellicherry black pepper corns which are vastly superior to regular pepper. Head over to Victor Steinbrueck Park for a great view of Puget Sound and then up to lunch at Matt's in the Market. Their food is outstanding, all the produce is selected from the market that morning and their meat and fish are of the highest freshness and quality. After lunch you can either check out a few of the hottest local art galleries or catch an independent film. SOIL has established itself at the forefront of the art scene in Seattle and the Crawl Space Gallery is also quite good. Otherwise head back up the hill to catch an early film at the Northwest Film Forum which has the best curator on the west coast. When you start to get hungry head a few blocks south of Pike on 12th Avenue to Lark, put your name on the list and pop next door to their sister bar Licorous for perfectly matched small plate cocktail pairings - they will let you know when your table is ready. Everything on the menu is a culinary work of genius. Try the tuna Carpaccio, the venison or the pheasant breast. They serve a salad worth copying with arugula, pear, hazelnuts and shaved pecorino drizzled with a shallot champagne vinaigrette. After dinner head over to the Hideout for an Andy Warhol: a perfect Cosmopolitan and a Polaroid of you and your friends. If you've still got steam, head over to the Cha Cha to check out the local wildlife and then to Havana for dancing or better yet, catch a live show at Neumo's or Chop Suey which book the best local, national and international acts. Be sure to check the listings in The Stranger (thestranger.com) for current shows.



Smith

Hipster bar on 15th



Frye Art Museum

American and European Paintings



Freeway Park

Urban retreat



Seattle Art Museum

Internationally recognized museum specializing in African and contemporary art.



Pike Place Market

Famous Produce and Seafood Market



Victor Steinbrueck Park

View park at the market



Matt's in the Market

In The Heart Of The Market



Northwest Film Forum

Cineaste paradise



Licorous

Great late-night food and drinks



Lark

Rustic, Artisan-Friendly Cuisine



Hideout (The)

No hiding at the Hideout



Havana

Vintage Cuban rum room



Cha Cha Lounge (The)

Tiki bar with attitude



Chop Suey

East meets west

Day 2 - Seattle

DAY NOTE: You have a few options for breakfast and since you're probably a little hung-over, it's important to pamper yourself with exactly what you want. Café Presse serves perfect provincial French fare and the staff are delightful. Smith serves a delicious, old school English breakfast which means high quality locally

Itinerary Overview

things to do
restaurants
hotels
nightlife

produced bacon and sausages, free range eggs, corned beef hash, fresh fruit and some of the best Bloody Mary's in town. Brunch at Crave is one of the most enjoyable experiences in Seattle, the staff are warm and friendly and the crab omelet will remedy any effects from the night before. They serve delicious pomegranate mimosa* if the scrumptious food isn't enough. After brunch you can walk through Cal Anderson Park to the Vivace Café for an impeccable cappuccino. Vivace's coffee is roasted on site and is so expertly prepared that several cafes in NYC have their barista's trained here and the beans flown in daily. Head north on Broadway to Joe Bar for a cookie and then walk up to Volunteer Park for a spectacular view of the Space Needle and a tour through the Asian Art Museum. You can watch the sunset from the park then head back down to Broadway for sushi at Aoki. If you're not hungry yet, stop for a drink on the rooftop deck of the War Room or check out the back patio at the Rosebud or Linda's Tavern. After dinner head to the Comet for a dive bar dip into Seattle's rich music history, they have local bands performing every Saturday. Otherwise head down to The Rendezvous and then to the Rebar. The Can Can is also a pretty great place to catch some local entertainment. If you're more in the mood for electronica, the Baltic Room and Chapel are both top notch. If you're looking for something a little more polished check out Viceroy or the Queen Anne Grill.



Baltic Room

Chic nightclub



Can Can

Kitchen and cabaret



Crave

Contemporary comfort food



Cal Anderson Park

Historic and fun



Seattle Asian Art Museum

Beautiful International Art



Aoki Japanese Grill & Sushi Bar

Some of the best sushi in Seattle



Comet Tavern

Retro nightlife



Rendezvous

Cocktails and kitsch



Re-Bar

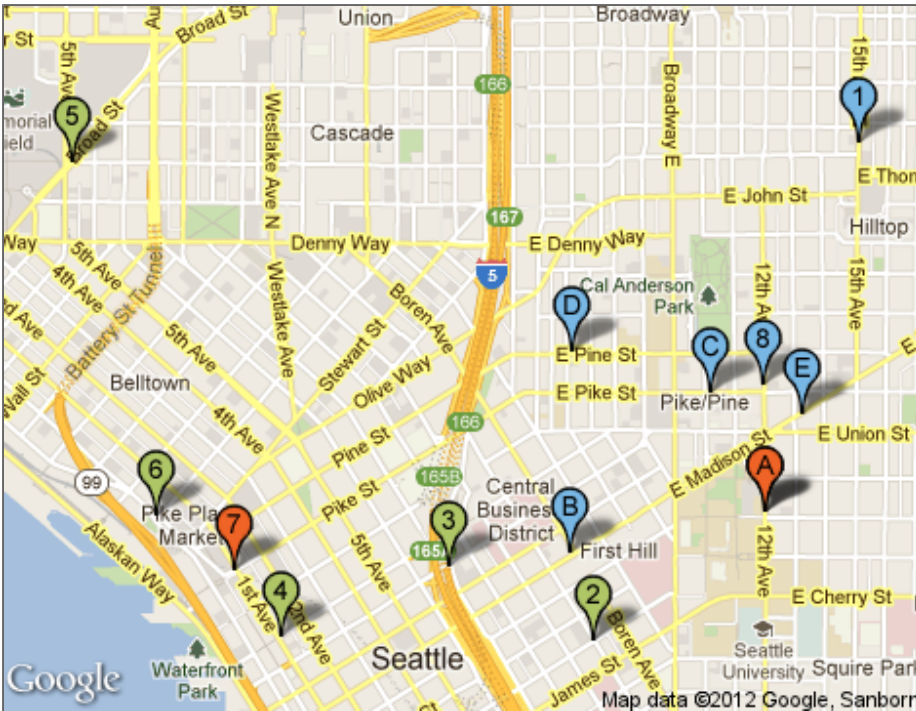
Outrageous and eclectic nightclub



The Chapel Bar

A refined space with spiritual influences

Day 1 - Seattle



QUICK NOTE

DAY NOTE: Start with a fabulous French Breakfast at Café Campagne or have an English breakfast at Smith then head over to the Frye Art Gallery and check out the latest exhibit. After breakfast you can walk down through Freeway Park to the Seattle Art Museum and then to Pike Place Market. The Market has all the delicious edibles you can imagine. Pick up some white truffle oil or truffle butter from La Buona Tavola, just next door you'll find gourmet herbed vinegars at Sotto Voce. De Laurenti carries hundreds of specialty artisan cheeses and many of them will fare just fine in your hotel fridge until you can get them home. The Pecorinos and Parmesans will last for a month or more so stock up and throw a tasting party when you get home. They also carry an extensive selection of imported meats so you may want to pick up some salami or prosciutto. If you're just interested in some Humboldt Fog and local chevre or camembert, Quality Cheeses is a few dollars less per pound and Thoma's is the sweetest cheese man in town. You can find homemade huckleberry jam and fireweed honey on the main floor of the market which make perfect gifts for friends and family and are absolute musts for any well-stocked pantry. Definitely check out Market Spice Tea where you can find an extensive tea selection, perfect herbs de province and Tellicherry black pepper corns which are vastly superior to regular pepper. Head over to Victor Steinbruek Park for a great view of Puget Sound and then up to lunch at Matt's in the Market. Their food is outstanding, all the produce is selected from the market that morning and their meat and fish are of the highest freshness and quality. After lunch you can either check out a few of the hottest local art galleries or catch an independent film. SOIL has established itself at the forefront of the art scene in Seattle and the Crawl Space Gallery is also quite good. Otherwise head back up the hill to catch an early film at the Northwest Film Forum which has the best curator on the west coast. When you start to get hungry head a few blocks south of Pike on 12th Avenue to Lark, put your name on the list and pop next door to their sister bar Licorous for perfectly matched small plate c***tail pairings - they will let you know when your table is ready. Everything on the menu is a culinary work of genius. Try the tuna Carpaccio, the venison or the pheasant breakfast. They serve a salad worth copying with arugula, pear, hazelnuts and shaved pecorino drizzled with a shallot champagne vinaigrette. After dinner head over to the Hideout for an Andy Warhol: a perfect Cosmopolitan and a Polaroid of you and your friends. If you've still got steam, head over to the Cha Cha to check out the local wildlife and then to Havana for dancing or better yet, catch a live show at Neumo's or Chop Suey which book the best local, national and international acts. Be sure to check the listings in The Stranger (thestranger.com) for current shows.

contact:
tel: 206 322-9420
<http://www.smithpub.com/>

location:
332 15th Ave E
Seattle WA 98112

1 Smith

DESCRIPTION: Local watering hole with communal tables. The staff is nice and attentive. Get the mac 'n cheese or the awesomely greasy fries and wash it down with a happy hour priced Guinness.

MY NOTE: Smith serves fabulous english breakfast.



contact:
tel: 206/622-9250
fax: +1 206 223 1707
www.fryeart.org

location:
704 Terry Ave
Seattle WA 98164

hours:
Tues-Wed and Fri-Sat
10am-4:30pm; Thurs
10am-7:30pm; Sun
noon-4:30pm

2 Frye Art Museum

DESCRIPTION: On First Hill not far from downtown Seattle, this museum is primarily an exhibit space for the extensive personal art collection of Charles and Emma Frye, Seattle pioneers who began collecting art in the 1890s. The collection focuses on late-19th-century and early-20th-century representational art by European and American painters, with works by Andrew Wyeth, Thomas Hart Benton, Edward Hopper, Albert Bierstadt, and Pablo Picasso, as well as a large collection of engravings by Winslow Homer. In addition to galleries filled with works from the permanent collection, temporary exhibitions are held throughout the year. © Frommer's



The Puppet Show... is one of those shows you can disappear down into, and at every level you go, you will get something more.

contact:
tel: +1 206 684 4075
<http://www.ci.seattle.wa.us/parks/parkspaces/freewaypark.htm>

location:
700 Seneca Street
Seattle WA 98101

hours:
6a-11:30p M-Su

3 Freeway Park

DESCRIPTION: If the words "freeway" and "park" jar you when used together, then you've understood the point of this wonderful space. This urban concrete park is littered with green spaces, trees and a waterfall. It is a haven for businesspeople who escape from the chaos of the day by finding tranquility here. It's also an ideal detour for those who are touring the city on foot. The only proviso is to avoid the park at night. As with any urban park, crime is a nocturnal danger. © wcities.com



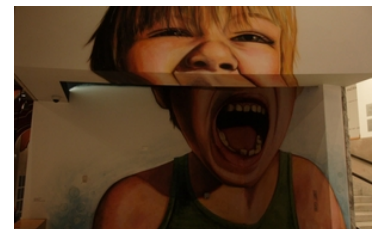
Photo courtesy of Freeway Park

contact:
tel: +1 206 654 3100
fax: +1 206 654 3135
<http://www.seattleartmuseum.org>

location:
100 University Street
Seattle WA 98101

4 Seattle Art Museum

DESCRIPTION: Seattle Art Museum has recently expanded and the new building houses a much more extensive and impressive collection of modern art in addition to world class collections of Native American, European, African and Asian art. The permanent collection is housed in a bright airy corridor, and spans several floors. Modern pieces playfully juxtapose traditional European works; an Andy Warhol shares space with a John Singleton Copeland and touring exhibits occupy the original structure. Brancusi and Botticelli anchor the second floor. If you've been disappointed by the original Seattle Art Museum, don't let your first exposure prevent you from experiencing the new Seattle Art Museum, the collection is



wcities

outstanding and the arrangement of the art is in itself a creative endeavor.

contact:

tel: 206/682-7453
fax: +1 206 625 0646
<http://www.pikeplacemarket.org/>

location:

85 Pike Street
Seattle WA 98121

5 Pike Place Market

DESCRIPTION: Nine acres of fresh produce, seafood, coffee, donuts, crafts, unique restaurants and friendly vendors, all set against a backdrop of the Puget Sound – that's Pike Place Market, widely recognized as one of the oldest and best farmer's markets in the country. If you only have one day in Seattle, head downtown to get a real taste of the city in every sense. From fresh cheese curds at Beecher's to chowder at Pike Place Chowder, from necklaces and bags to hand-stitched leather journals and hats, from accordions to pianos to hula-hooping guitarists – there's something for your eyes, ears, and nose everywhere you look at the market.

© NileGuide



contact:

tel: +1 206 684 4075 (Seattle Parks)
<http://www.pan.ci.seattle.wa.us/parks>

location:

2000 Western Avenue
Seattle WA 98101

hours:

Call for details

6 Victor Steinbrueck Park

DESCRIPTION: Named for the mid-century Seattle architect and artist who fought to preserve the Pike Place Market, this park is minuscule but beloved. The grassy knoll provides a much needed rest and lunch spot for market visitors and workers. The view of Elliott Bay (over the admittedly horrendous Alaskan Way Viaduct) is fabulous. Steinbrueck's son, Peter, is now a member of the city council, and is fighting to preserve the park's views from a hotel developer who wants to block them. The Seattle tradition of liberal politics lives on. © wcities.com



Photo courtesy of Victor Steinbrueck Park

contact:

tel: 206/467-7909
www.mattsinthemarket.com

location:

94 Pike St
Seattle WA 98101

hours:

Mon-Sat 11:30am-2:30pm
and 5:30-10pm

7 Matt's in the Market

DESCRIPTION: This casual gourmet restaurant has the best location of any restaurant in Pike Place Market. Located on the third floor of the Corner Market Building, Matt's faces the big neon clock that is the quintessential symbol of the market. Until 2007, Matt's was a tiny cubbyhole of a place, but an expansion has given it enough tables that you can actually get in to eat here on short notice. The menu changes regularly, with an emphasis on fresh ingredients from the market stalls that are only steps away. There's also a good selection of reasonably priced wines. The food reveals whatever influences and styles happen to appeal to the chef at that moment -- perhaps Moroccan, perhaps Southern. However, if the menu happens to list anything with smoked catfish, try it. © Frommer's



citysearch

contact:

tel: 206 329 2629

fax: 206 329 1193

<http://www.nwfilmforum.org>

location:

1515 12th Avenue
Seattle WA 98122

8 Northwest Film Forum

DESCRIPTION: This movie house is more than a minimalist haven for the independent filmmaker. It is also a non-profit organization that is dedicated to inspiring, assisting and producing movies by up-and-coming directors. On a given week, you can watch films by local talent, or productions from across the globe: French, Chilean, Austrian, and more. From an autobiography about a group of Icelandic musicians to a drama portraying a South American political coup, there is a storyline for any movie buff. Two small screens, with a capacity of 125 and 45 people offer comfortable stadium seating and an art-deco atmosphere. These screens also act as the golden showrooms for the 250 filmmakers the organization aids yearly. Pre and Postproduction workspace, rentals, and a film library consisting of over 1,000 motion pictures are also onsite. Whether your vocation is to be an independent director, or you just want to watch an eye opener, this is a must stop. Please see their website for showtimes. © wcities.com



Northwest Film Forum

contact:

tel: 206 325 6947

<http://www.licorous.com/index.html>

location:

928 12th Avenue
Seattle WA 98122

hours:

Tu-Sa 5p-1a

9 Licorous

DESCRIPTION: Licorous, whose original name means, "tempting the appetite" and "relishing good food," is an ultimate spot that serves great, affordable food and cocktails. The chefs prepare a variety of dishes that are available for order late into the night. Their cocktail menu is diverse and you might even get to enjoy an original mix as the bartender often experiments with new concoctions. Licorous is uniquely decorated in orange and salmon colors that creates an atmosphere of escape from the outer world. © wcities.com



Photo courtesy of Licorous

contact:

tel: 206/323-5275

<http://larkseattle.com/>

location:

926 12th Ave
Seattle WA 98122

hours:

Tues-Sun 5-10:30pm

A Lark

DESCRIPTION: This little hole-in-the-wall is a prime example of finding elegance and exquisite food in unexpected places. Owned by Chef Jonathan Sundstrom, Lark is not where you come to eat – it's where you come to experience food. Rather than ordering an entree, the menu consists of small plates, so you can sample several succulent dishes, all of which are seasonal and prepared using local ingredients. Ingredients that are transformed into dishes like seared foie gras with rhubarb and spring onions, rabbit salad with asparagus, incredible cheese plates and desserts like pineapple tarte tartin with rum caramel. © NileGuide



Photo courtesy of Lark

contact:
tel: 206 903 8480
<http://www.hideoutseattle.com/>

location:
1005 Boren Avenue
Seattle WA 98104

hours:
4p-2a M-F, 6p-2a Sa-Su

B Hideout (The)

DESCRIPTION: Described by the owners as a 'five-year performance art installation with a full bar', you just know that the place is going to be nothing short of unique. This eclectic loungey hangout is a Mecca for the creative arty crowd in Seattle. You are free to write, draw, act or interact with other patrons, whatever your creative heart desires! The velvet curtains, dark corners and large chandeliers - all add to your sense of impending drama. After you get used to the slightly weird atmosphere, indulge in the great variety of alcohol and nightly specials of drinks and appetizers that this place offers. © wcities.com



citysearch

contact:
tel: +1 206 323 2822
fax: +1 206 323 2832
<http://www.havanasocial.com/>

location:
1010 East Pike Street
Seattle WA 98122

hours:
Daily 4p-2a

C Havana

DESCRIPTION: Havana brings a bit of Summer year round to rainy Seattle. Its original tin roof and light fixtures, marble bar, big red booths and palm trees create an authentic feel of vintage Cuba. A welcome change from the crowded clubs and posh lounge scene, Havana offers a fun and sociable setting on weeknights as well as DJ's and a packed dance floor on the weekend. The island theme carries over to the bar with a list of innovative twists on classic rum cocktails, but a nice list of top shelf scotches and cheap local brew Olympia on tap ensure there is something for everyone. This bar has no signage, look for a black awning in the parking lot across from Cafe Vitta. © wcities.com



citysearch

contact:
tel: 206 329 9978
<http://www.chachalounge.com/>

location:
506 East Pine Street
Seattle WA 98122

hours:
4p-2a M-Su

D Cha Cha Lounge (The)

DESCRIPTION: Known as ground zero for Seattle rock and roll royalty, the Cha Cha is hipster central. Locals congregate around the bar and tables up front, always seeming to keep an eye on the door. © wcities.com



citysearch

contact:
tel: 206 324 8000
<http://www.chopsuey.com>

location:
1325 East Madison
Seattle WA 98122

hours:
Doors open at 8p

E Chop Suey

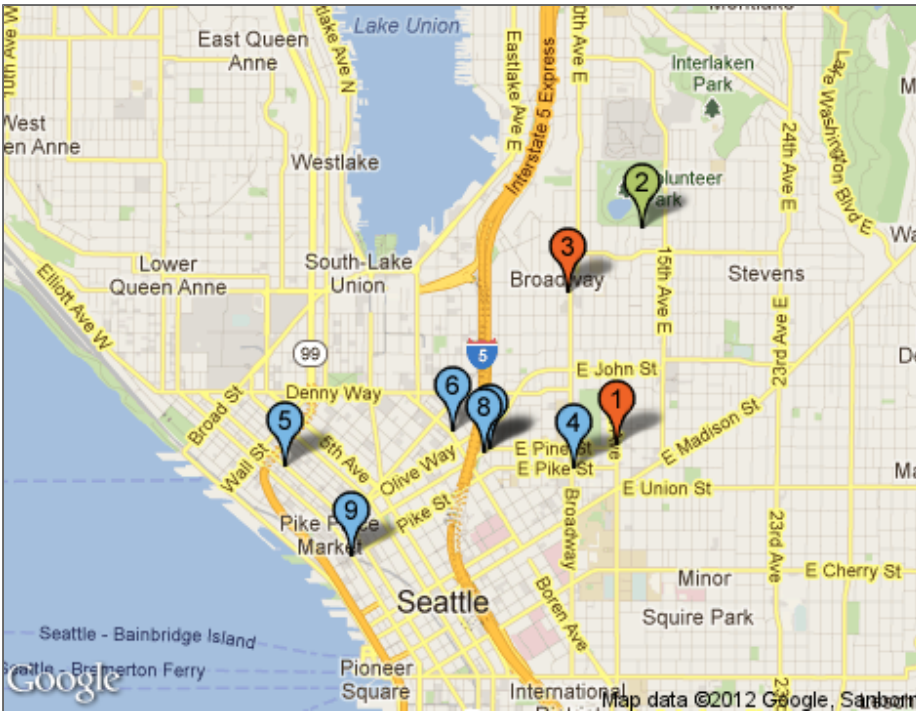
DESCRIPTION: American rock blends with Chinese kitsch at this popular hangout, a combination leading hipster crowds to flock in to hear their favorite bands perform. Red lanterns, dark wood, and a pagoda-styled stage lend a mysterious air to the interior, where some of Seattle's hottest local groups play side-by-side with nationally touring performers. With large dance floors, extensive bars, and seductive lounge-rooms, Chop Suey offers more of a nightclub atmosphere than many



Photo courtesy of Chop Suey

comparable venues, making it a multi-functional stage where fans of rock music feel just as at home as those seeking the mellow beats of the hottest electronica groups. The calendar is full of performances, so be sure to check out the website for the latest updates and information on age restrictions for each night. © wcities.com

Day 2 - Seattle



QUICK NOTE

DAY NOTE: You have a few options for breakfast and since you're probably a little hung-over, it's important to pamper yourself with exactly what you want. Café Presse serves perfect provincial French fare and the staff are delightful. Smith serves a delicious, old school English breakfast which means high quality locally produced bacon and sausages, free range eggs, corned beef hash, fresh fruit and some of the best Bloody Marys in town. Brunch at Crave is one of the most enjoyable experiences in Seattle, the staff are warm and friendly and the crab omelet will remedy any effects from the night before. They serve delicious pomegranate mimosa if the scrumptious food isn't enough. After brunch you can walk through Cal Anderson Park to the Vivace Café for an impeccable cappuccino. Vivace's coffee is roasted on site and is so expertly prepared that several cafes in NYC have their baristas trained here and the beans flown in daily. Head north on Broadway to Joe Bar for a cookie and then walk up to Volunteer Park for a spectacular view of the Space Needle and a tour through the Asian Art Museum. You can watch the sunset from the park then head back down to Broadway for sushi at Aoki. If you're not hungry yet, stop for a drink on the rooftop deck of the War Room or check out the back patio at the Rosebud or Linda's Tavern. After dinner head to the Comet for a dive bar dip into Seattle's rich music history, they have local bands performing every Saturday. Otherwise head down to The Rendezvous and then to the Rebar. The Can Can is also a pretty great place to catch some local entertainment. If you're more in the mood for electronica, the Baltic Room and Chapel are both top notch. If you're looking for something a little more polished check out Viceroy or the Queen Anne Grill.

contact:
tel: 206 388 0526
<http://www.cravefood.com>

location:
1621 12th Avenue
Seattle WA 98122

hours:
Daily: 7a-11p

1 Crave

DESCRIPTION: Crave has something exceptional to offer for breakfast, lunch and dinner. Almost everything on the menu is made from scratch using fresh, locally grown produce and organic, free-range meats. From handcrafted tables and booths to large picture windows overlooking the funky locals passing by, Crave has a unique ambiance. With fresh pastries every morning and intriguing dinner entrees such as Mole Braised



citysearch

Lamb Shank slow cooked with Ibarra chocolate, there is something to crave here any time of day. For wine lovers their artisan bread selection and extensive rotating cheese menu is delightful. Also offered is free wireless internet access, a tasty weekend brunch, and authentic Italian espresso. © wcities.com

contact:

tel: (206) 684-4075
http://www.seattle.gov/parks/park_detail.asp

location:

1635 11th Ave
Seattle WA

Cal Anderson Park

DESCRIPTION: Recently redesigned, Cal Anderson Park includes a fountain, texture pool, and reflecting pool; promenade paths, landscaping, a shelterhouse, plaza, children's play area, wading pool and lighted sports field. This open park invites walking, sitting, reading, contemplation, informal sports in the meadow and organized sports on the athletic field. Walkers: the circumference of the park on the sidewalks, including Bobby Morris Playfield, is 3,325 lineal feet, or about 2/3 of a mile. An interior loop on gravel paths, using the old concrete gatehouse as the most southern edge and passing the cone water feature to the north, is 1,700 lineal feet, or about 1/3 of a mile.



http://www.seattle.gov/parks/_images/parks/bobbymorpf.jpg

contact:

tel: 206/654-3100
www.seattleartmuseum.org

location:

1400 E. Prospect St
Seattle WA 98102

hours:

Tues-Wed and Fri-Sun
10am-5pm, Thurs 10am-9pm

2 Seattle Asian Art Museum

DESCRIPTION: Housed in an Art Deco building in Volunteer Park, the art collection at this museum places an emphasis on Chinese and Japanese art, but also includes works from Korea, Southeast Asia, South Asia, and the Himalayas. Among the museum's most notable pieces are Chinese terra-cotta funerary art, Chinese snuff bottles, and Japanese netsukes (belt decorations). Entire rooms are devoted to Japanese and Chinese ceramics. The central hall contains stone religious sculptures from South Asia (primarily India). The museum hosts frequent lectures and concerts. © Frommer's



photo courtesy of cityofseattle.net

contact:

tel: 1 206 324 3633
http://seattle.citysearch.com/profile/10772942/seattle_wa/aoki_japanese_grill_sushi_bar.html

location:

621 Broadway E
Seattle WA 98102

hours:

Tue-Thu 11:30am-3pm,
5pm-10pm Fri-Sat
11:30am-3pm, 5pm-11pm
Sun 5pm-10pm

3 Aoki Japanese Grill & Sushi Bar

DESCRIPTION: Aoki, a long-time sushi favorite on Capital Hill, has a relaxed sushi bar in the front and a intimate dining room in the back. Perfect for sushi before or after a movie at Harvard exit or a walk in Volunteer Park. The sushi chefs are super cool and the staff are incredibly nice.



citysearch

contact:
tel: 206 323 9853
<http://www.comettavern.com/>

location:
922 East Pike Street
Seattle WA 98122

hours:
Noon-2a M-Su

4 Comet Tavern

DESCRIPTION: With a sign outside that seems to have gone unwashed for decades (perhaps since its opening in the post-prohibition year of 1936), floorboards that creak in protest at every step, and very smoky air, this bar seems to be appropriate for those who take their nightlife seriously. Its bark, however, is much worse than its bite. The clientele consists primarily of fun-loving fans of retro fashions. So, put a quarter on the pool table or pull up a stool at the bar and order one of the many available microbrews. © wcities.com



citysearch

contact:
tel: 206 441 5823
<http://www.jewelboxtheater.com/main/>

location:
2320 Second Avenue
Seattle WA 98121

hours:
Noon-2a M-Su

5 Rendezvous

DESCRIPTION: If you want a taste of what Belltown was like before its economic skyrocket, take an evening here and at the 211 Billiard Club. The drinks here are inexpensive but incredibly strong. There is a selection of simple American fare, including sandwiches and salads. The real attraction here is the slightly mossy velveteen decadence of the Jewelbox Theater in the rear. It hosts alternative bands (ranging from awful to excellent), poetry readings and other events. © wcities.com



citysearch

contact:
tel: 206 233 9873
<http://www.rebarseattle.com/>

location:
1114 Howell Street
Seattle WA 98101

hours:
6p-2a Tu-Su

6 Re-Bar

DESCRIPTION: Home to some of Seattle's most outrageous live entertainment, this remarkable club serves up everything from house music to delightfully subversive plays. Featuring weekly theme nights, it remains a trailblazing gay bar, attracting patrons with a wide range of sexual orientations to its fabulous and hysterical productions. The intimate venue has two rooms and a tiny but fully stocked bar. The place can get pretty crowded on weekends. Don't miss the frequent and magnificent Drag King contests. © wcities.com



Photo courtesy of Re-Bar

contact:
tel: 206 447 4180
fax: 206 447 9777
<http://www.thechapelbar.com/>

location:
1600 Melrose Avenue
Seattle WA 98122

hours:
Su-Th 5p-1a; F-Sa 5p-2a

7 The Chapel Bar

DESCRIPTION: Originally built in the 1920's in Butterworth's Mortuary, The Chapel Bar still stands today as a place where people can come to enjoy quality food and drinks. The bar/restaurant is more than just a late-night hangout; it's a place where people can enjoy themselves in an individual, elegant space. The Chapel Bar offers a wide menu and drink selection with happy hour everyday (5p-8p). Also, this is a great location for private events such as receptions and holiday parties as the bar features a semi-private balcony that is situated above the main area of The Chapel Bar. © wcities.com



citysearch

contact:
tel: 206 625 4444
<http://www.thebalticroom.net/>

location:
1207 Pine St
Seattle WA 98101

hours:
Daily 6p-2a

8 Baltic Room

DESCRIPTION: With bare tables graced with candles and dim atmosphere enhanced by "stars" punched into the ceiling, this always-packed bar attracts lovely twenty- and thirty-somethings who come to attract each other. The loft gives an excellent sky-high vantage point, while serious flirts congregate at the bar. The tiny stage features top-notch soul, latin, jazz, blues and visiting DJs. This is not a good place for conversation when it's crowded and full of music, but then, who really wants to talk here, anyway? © wcities.com



Photo courtesy of Baltic Room

contact:
tel: 206 652-0832
<http://www.thecancan.com/>

location:
94 Pike Street
Seattle WA 98101

hours:
4:30PM-1AM

9 Can Can

DESCRIPTION: Can Can is one of Seattle's most celebrated, award winning nightspots in the city. Located in the heart of the Pike Place Market in downtown Seattle, Can Can's underground setting is evocative of Paris at the turn of the 20th century.



Photo courtesy of Can Can

contact:

tel: +1 206 325 8263

fax: 206 325 2687

<http://www.barcaseattle.com/>

location:

1510 11th Avenue
Seattle WA 98122

hours:

Daily 5p-2a

1 Barca

DESCRIPTION: Step away from Seattle and into Barcelona. Barca balances between a large, popular bar and an intimate, welcoming joint. A wide assortment of draught beers, hand-picked wines and vodkas, and specialty drinks (you've got to try the Queen Bee) are only half of Barca's allure. Barca's atmosphere is the other - with a beautifully crafted bar, romantic mezzanine level, and tiny nooks throughout. Enjoy the relaxing, comfortable vibes with a classic cocktail, beer, or experimental creation of the Barca bar staff. Call or check website for events or specials. © wcities.com



citysearch

contact:

tel: 206 682 4142

fax: 206 448 1979

<http://www.tomdouglas.com/dahlia.html>

location:

2001 Fourth Avenue
Seattle WA 98101

hours:

Lunch: 11:30a-2:30p M-F,
Dinner: 5p-10p M-Th, 5p-11p
F-Sa, 5p-9p Su

2 Dahlia Lounge

DESCRIPTION: Deep red walls, funky art, fantastic food and a wine bar balcony make this downtown restaurant a local favorite. Chef/owner Tom Douglas, who also owns Etta's Seafood and Palace Kitchen, spares nothing to make the most interesting, flavorful, beautifully presented dishes. For appetizers, try the Seared Scallops and Kalua Pig. Entrees feature numerous seafood selections and wood-grilled meats. Do not skip dessert. Douglas is renowned in Seattle for his Coconut Cream Pie with white chocolate. © wcities.com



Dahlia Lounge

Seattle Snapshot

Local Info

If all you know about Seattle is rainy days and the Space Needle, come take a closer look. Seattle (which, incidentally, gets less rainfall per year than New York City) is divided into several neighborhoods, each with their own main strips, nightlife, parks and exciting points of interest. Pick a zone, any zone, and spend the day getting to know the real Seattle.

Ballard

One of the most popular neighborhoods for those not willing to live "in" the city, Ballard has a personality all its own. Golden Gardens Park is a great place for a walk or bike ride, and there's plenty of drinks and seafood available at restaurants like Bad Albert's Tap & Grill and Ray's Boathouse.

Capitol Hill

A political-sounding name for what is unmistakably a liberal, life-loving neighborhood. If you've only got a few days in Seattle, you could easily spend an entire day just in Capitol Hill, checking out the Seattle Asian Art Museum, grabbing a latte at one of dozens of cafes, or browsing for books at the Elliot Bay Bookstore's new location.

Fremont

"Welcome to the Center of the Universe"; this is the sign that greets you in Fremont, and it only gets quirkiest from there. There's the famous Fremont Troll hiding under the Aurora Bridge, as well as a statue of none other than Lenin in the center of the neighborhood. This is the place for the Fremont Oktoberfest (for beer lovers) and Fremont Fair and Solstice Parade (for those who can't get enough of the naked body-paint bike parade). Of course, there's shops, cafes and restaurants galore, each with its own flavor and personality.

Madison Park

Looking for a relaxing day to take a stroll, see a few sights and find a nice cafe to chat over a cup of coffee? Madison Park has all this and more, with the Madison Park & Beach offering gorgeous views, and the bistro-style menu at Madison Park Café offering classic French food and wine, the perfect end to the day.

International District

If dim sum, sushi, or bibimbap is what you're craving, head to the International District, east of downtown Seattle. In addition to a selection of various Asian restaurants, take some great family photos under the pagoda at Hing Hay Park, or visit the Wing Luke, a small museum that offers a big peek into the art and culture of Japan and China.

Kirkland

Kirkland, in a word, is classy. A quick drive across the lake brings you to a selection of trendy cafes, fabulous art galleries, and world class restaurants like Trellis, which features a menu of seasonal, "farm-to-table" meals. Wine enthusiasts will appreciate not only the many wineries, but also Kirkland Uncorked, the neighborhood's annual "Wine, Dine and Design" festival.

Pike Place Market

The market on any given weekend is buzzing with tourists and locals alike, sampling fresh local produce, checking out the catch of the day, or shopping for the perfect souvenir. Pike Place is the United States' oldest farmer's market, and in addition to groceries boasts a huge variety of restaurants, including the original Starbucks. Piroshky Piroshky is an iconic stop, where visitors line up to purchase delicious sweet and savory Russian piroshkys, and a hot bread bowl of seafood bisque or one of several chowders at Pike Place Chowder is the perfect meal on a chilly, gray day.

Pioneer Square

As the historic area of Seattle, Pioneer Square is one of the biggest tourist attractions in the city. History lovers will adore the Underground Tour, which leads you beneath the city to the original Seattle. This is also a popular area for nightlife, with options like a drink at Central Saloon or an evening belting out your favorite tunes at 88 Keys Dueling Piano Bar.

Queen Anne Hill

This is what suburbs are meant to be; at least, for those who don't want to give up the convenience and quirk of the city. Queen Anne manages to be both trendy and understated, from indie bookshops like Queen Anne Books to the hip martini stop Tini Bigs.

Redmond

Its country location doesn't hide the fact that Redmond is home to huge corporations, including Microsoft and Nintendo, which make this one of the more affluent neighborhoods. Both Marymoor Park and the Lake Sammamish State Park are on the list for cyclists and walkers, and for those more interested in shopping, check out Redmond Town Center.

Seattle Center

So much more than just the Space Needle; if you're looking for a place to take the kids on a nice day, Seattle Center is the place to be. In addition to famous Seattle events like Bumbershoot and The Bite of Seattle, the center has plenty of restaurants, rides and arcade games for the kids, as well as the Pacific Science Center, Seattle Opera, and Intiman Theater. Museum lovers can't miss Seattle's famous Experience Music Project/Science Fiction Museum & Hall of Fame, which is also the end of the Monorail (which goes straight to Westlake Center).

University District

That's a mouthful; locals call it "U-Dub," the neighborhood known for fantastic restaurants, bars, shops, and the beautiful campus of the University of Washington. This is a hip, energetic neighborhood with everything from clubs to farmer's markets, as well as the fabulous University Bookstore. For Apple geeks, University Village houses the only full Apple Store in Seattle.

Waterfront

Get your quintessential West Coast fix with a stroll along Seattle's Waterfront, with an endless supply of picturesque scenes perfect for capturing a great family photo. In addition to the ferry terminal, where you can head off to Bainbridge or Bremerton Islands, you can also catch a fun water taxi over to West Seattle (much more fun than the long bus ride). Some of Seattle's most well-known restaurants are on the waterfront, including Elliott's Oyster House and Ivar's, and kids and adults alike will have a blast at the Seattle Aquarium.

West Seattle

Five minutes strolling down the street, sand and ocean on one side and bungalow-

Seattle Snapshot continued

style houses, burger joints and cafes on the other, you'll swear you were in California instead of Washington. The West Seattle

vibe is laid back and a popular place for water sports as well as bikers and joggers. Don't miss Alki Beach, Seattle's most famous beach, where you can lay in the

sun with a view of downtown on the other side of the bay.

© NileGuide